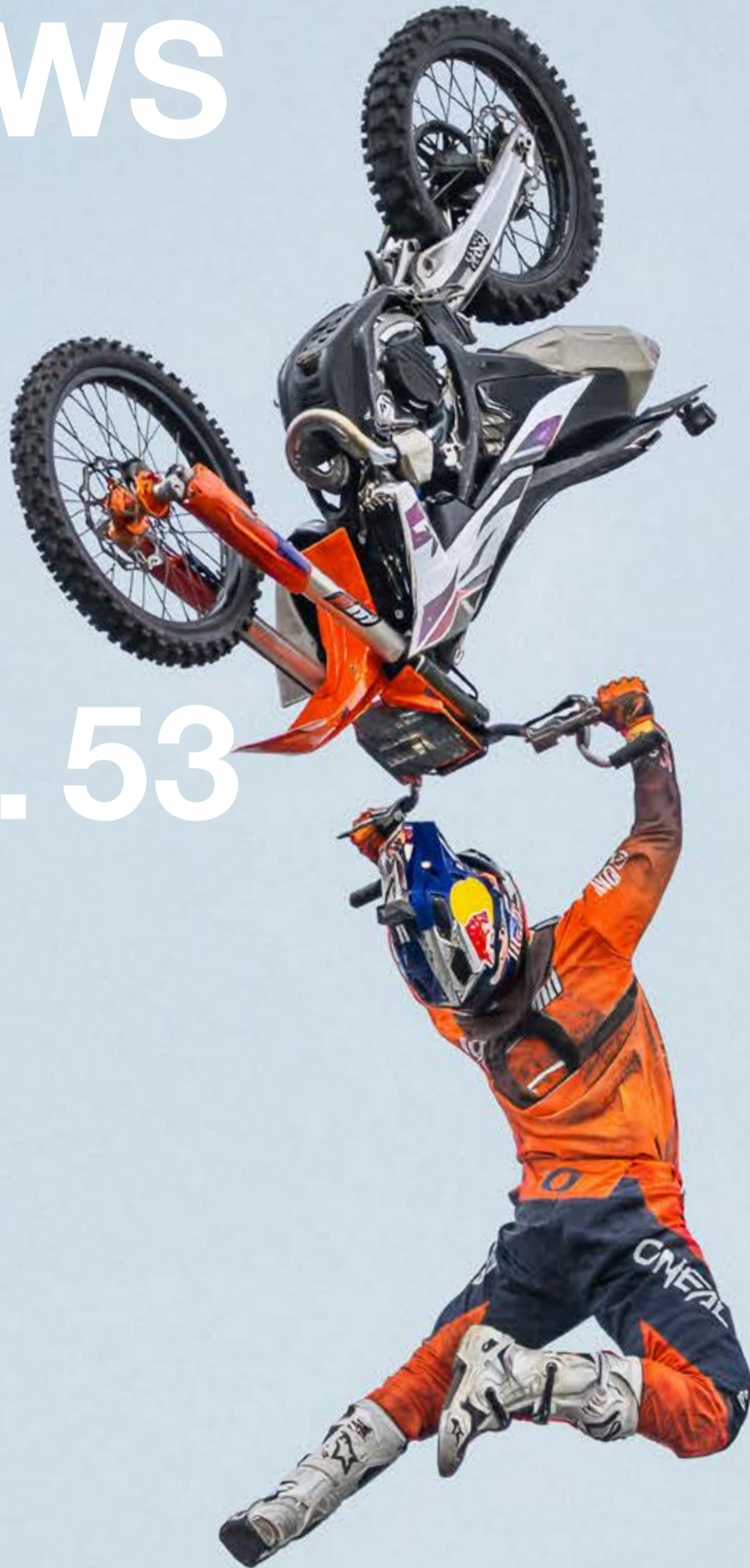


# ELA NEWS

The customer magazine  
[www.ela-container.com](http://www.ela-container.com)

ela[container]

## NO. 53



WWW.  
ELA-CONTAINER.  
COM

# RED BULL X ELA CONTAINER

Motocross jump with FMX world champion Luc Ackermann



Image above

Freestyle motocross rider Luc Ackermann jumping over an overhead clearance check.

Image 01

Luc brimming with joy after what just might be the best-timed jump ever.

Image 02

An ELA double container system served as a mobile workspace for the production team.

Image 03

A container lounge was used as a retreat for training and turnaround breaks.



01



02



03

“For Red Bull, it’s all about making what seems impossible possible – and those are values that motivate us at ELA too. With our flexible room solutions, we, too, can overcome any challenge.”

Günter Albers  
Managing Partner of ELA Container

### Spectacular motocross jump made possible by ELA and Red Bull

Known for offering athletes a stage for spectacular challenges, Red Bull is always on the lookout for the next great athletic feat. Through our partnership, we implemented a project that demonstrates what happens when courage, precision, and the right infrastructure all come together.

**Spectacular backflip from one moving truck to another**

This project pushed the boundaries of what’s possible. On his FMX bike, freestyle motocross world champion Luc Ackermann performed a spectacular 40-meter jump from one moving truck to another fitted with container walls, pulling off a tsunami backflip over a nine-meter-tall highway overhead clearance check in the process. Because he had a window of just half a second to achieve the perfect liftoff, this is already considered to be the best-timed motocross jump of all time. Everything had to be just right, from the constant speed of 20 km/h of the trucks below him to the exact moment of acceleration, which was signaled by his brother Hannes Ackermann.

“The feeling after the jump was overwhelming – I realized just how close it had been. [...] It took a few days to get everything ready. The tension was palpable. The fact that this tension had simply melted away was overwhelming. I celebrated like there was no tomorrow and basically flipped out,” says Luc Ackermann.

### Just the right ELA infrastructure backstage

Implementing a project of this magnitude required more than just courage and peak athletic performance. It also required just the right infrastructure, for which ELA provided the necessary foundation. In addition to a special container with fold-out exterior walls as a lounge area, we also provided a double container system as a workspace for the production team.

### A strong partnership

The breathtaking jump was a huge hit locally, but also generated significant media coverage, from TV and online reports to a strong presence on social networks. This project is a prime example of the power of our successful partnership with Red Bull, the impact of which extends far beyond the moment.

“We’re proud to have been part of this project and to have helped make it so extraordinarily successful,” says Günter Albers, ELA Managing Partner.

[Watch video](#)  
Simply scan the QR code.



[Behind the scenes](#)  
Simply scan the QR code.



# THANK YOU, LIESEL!

## Liesel Albers-Bentlage goes into retirement after 41 years of service



After more than four decades with the company, Liesel Albers-Bentlage retired at the end of 2025. She can look back on some eventful times and many milestones that shaped both the company and her herself.

Liesel kicked off her career at ELA, her parent's business, as a trainee on August 1, 1984. As a member of the management, she had been responsible for finances and taxes since 2005 and never lost sight of the big picture. Under her management, ELA excelled both economically and culturally. Like nobody else, she represents the easy-going culture, team spirit, and informal atmosphere that continues to distinguish ELA to this day.

She and her brothers, Tim and Günter, took over company management in 2005 and thus initiated a generational change that marked the start of a consistent path of expansion at ELA.

The first family constitution in 2009 represented another important step that formally established the company's values, cohesion, and succession for the first time, thus laying the groundwork for a strong family business with a long-term focus. Notable highlights in her career also include the introduction of a modern corporate identity in 2014 and the 50th company anniversary in 2022.

"After many fulfilling years with ELA Container, this is the right time for me

to retire. Looking back, I'm eternally grateful for the trust our customers, partners, and employees have placed in us. I'm particularly proud of just how well we have positioned our company to be stable, internationally focused, and forward-looking over the long term. I'm delighted to see that the next generation is now taking on more responsibility and continuing to manage ELA with fresh impetus and new ideas," emphasizes Liesel, who will remain in close contact with the company as a member of the Advisory Board and family office.

The ELA Container GmbH management will maintain its tried-and-tested form, but with the reinforcement of the next generation. Pia Albers has been a mem-

ber of the management since 2024 and represents the intergenerational transition. And Fabio Albers joined the company last year as another representative of the next generation and is responsible for developing a sustainable financial strategy, among other things.

"My 40th anniversary with the company last year was a personal milestone that showed me how closely connected my life has been with ELA. [...] After so many years, I'm filled with gratitude and pride at how ELA has developed – from its humble beginnings to a strong international brand."

Liesel Albers-Bentlage  
Former Managing Director of ELA Container



The entire workforce surprised Liesel with a Christmas market created just for her in front of Diner 72 and applauded her for her contributions upon her retirement.



Hans Gatzemeier (left) hands over the management responsibilities he shared with Günter Albers to his successor, Thorsten Kroes (right).

New management following  
Hans Gatzemeier's retirement

## CHANGE IN MANAGEMENT AT ELA CONTAINER OFFSHORE

A new chapter is beginning at ELA Container Offshore, which specializes in the offshore sector. Hans Gatzemeier, who during his time at ELA played a key role in establishing the subsidiary, entered retirement at the end of 2025. His successor, Thorsten Kroes, and Günter Albers have been managing ELA Container Offshore GmbH ever since. Hans has been offering his support since Thorsten joined the ranks in May 2025.

Thorsten has many years of international experience in shipbuilding. His roles have included project manager at the Meyer shipyard, where he was most recently responsible for the Meteor IV research ship. "For me, ELA combines a professional challenge and my close connection to the Emsland region – it's precisely this combination that won me over," says Thorsten, who lives in Papenburg. He says that his conversations with the management and the open corporate culture at ELA also helped to finalize his decision. But he also sees many parallels in terms of subject matter: "Many shipbuilding topics translate wonderfully to offshore projects," he emphasizes.

"Thorsten has an ideal blend of experience, a fresh perspective, and a strong identification with our values. It was important to me to begin the transition early and proceed step by step. Thorsten was gradually integrated into personal communication with customers, suppliers, and the entire ELA Group as well as in all regular meetings, which allowed him to get to know the team and our product portfolio better day by day," explains Hans.

Thorsten has a clear vision for the future: "There is still a lot of potential in the offshore sector, with power generation at sea slated to significantly increase by 2045. Thanks to our flexible, modular solutions, we're well positioned to fulfill this demand."

Working with Günter Albers and the entire team, Thorsten would like to proceed along this same path and continue writing ELA Container Offshore's success story – with an equal focus on continuity and new beginnings. He plans to maintain successful partnerships, conquer new markets, and further develop innovative solutions.

**"For me, what really counts is not only business, but also personal relationships. Trust is absolutely essential, especially in our industry, and that often requires direct exchange."**

Thorsten Kroes  
ELA Container Offshore Management

Hans Gatzemeier and Thorsten Kroes discuss personal milestones and future plans for ELA's offshore business.

**Hans, what are some of the milestones and successes you associate with your time as Managing Director? What are you most proud of?**

One extraordinary milestone was the Blue Giant project in 2008, which was our entry into the offshore sector. We developed a six-story container system for around 200 people. These units are still in use today and symbolize the quality and durability of our products. It was this project that led to the idea of establishing ELA Offshore as an independent company. I had the pleasure of contributing throughout the entire journey, from the first prototypes and certification in accordance with offshore standards to successful establishment in the market. We've also accomplished a great deal internally, including the move to our new office building in 2016, expansion of the production facility at Eurohafen in 2022 and 2023, and ongoing development of a strong team. What I'm most proud of is the fact that I've always been able to continue developing at ELA, from CAD design and quality management to leadership. The mix of technology, entrepreneurship, and teamwork has made this a very special time for me.

**Thorsten, what are your goals and what potential do you see for ELA Offshore?**

I see enormous growth potential for ELA Offshore over the next several years. The expansion goals associated with the network development plan alone reveal just how far the offshore industry will grow – both out at sea and in nearshore projects. Our versatile, modular solutions can be mixed and matched in many

different ways, allowing us to respond to market requirements, from sleeping and office containers to kitchens, gyms, and complete infrastructure.

**Hans:** We need to clearly position ourselves in the market – with reliable products, faster responses, and genuine commitment to customers. Those who have had a good experience with us will return – or recommend us to others. As we've seen for ourselves over the years, relationships built on trust and personal connection often continue to pay off for years to come – occasionally in some very surprising ways.

**Hans, what would you like to leave your successor with?**

It goes without saying that I'm happy to share all the experience I've gained over the years with Thorsten. What's important to me is the fact that the market still offers enormous potential. And I firmly believe that he'll set the right course with fresh ideas and clear leadership. I'm always just a phone call away. I wish him all the best in his new role and hope he finds satisfaction in his new responsibilities.

**Thorsten, what are you most looking forward to?**

What I'm most excited about is getting to know many new people because, alongside business, personal relationships are what matter most to me. Trust is absolutely essential, especially in our industry, and that often requires direct exchange. For a customer relationship to thrive over the long term, you need to not only know but also appreciate each other – and that fits in well with the corporate culture at ELA.



As a new Managing Director, Thorsten is committed to growth, innovation, and strong partnerships in the offshore sector.

# THE FOUNDATION OF SUSTAINABILITY

## Climate and environmental protection

### 01 Environment



**Climate change and environmental protection**  
 We're committed to using resources responsibly and actively protecting the climate throughout the entire value chain. We record our emissions annually in accordance with the GHG Protocol (Scopes 1 to 3) and are reducing them in a targeted way. We're decreasing direct CO<sub>2</sub> emissions with measures like low-emissions vehicles and optimized routes, and indirect emissions with sustainable energy and responsible procurement.



**Circular economy and resource conservation**  
 Our modular product design promotes durability, reusability, and repair. In our rental business, we rely on maintenance and reuse to strengthen closed cycles. We're also using more and more recyclable materials and secondary raw materials to reduce our consumption of raw materials and assume environmental responsibility in an economical way.

To fully live up to our responsibilities as a company, we focus on three central ESG areas of action that form the foundation of our overarching sustainability targets and provide clear guidance for our daily operations.

## Social responsibility

### 02 Social



**Occupational health and safety**  
 The well-being of our employees takes top priority. We offer safe, ergonomic workstations and promote diversity, equal opportunity, and a healthy work-life balance. Training courses and health initiatives strengthen physical and mental well-being, while flexible work models and high standards ensure health and safety over the long term.



**Responsible supply chains**  
 We assume responsibility throughout the entire supply chain and expect our business partners to do the same. Maintaining international standards on human rights, working conditions, environmental protection, and ethics is required – and ensured through selection processes, guidelines, and self-commitments. We pursue long-term partnerships based on shared values, with space for responsibility and innovation.



**Customer health and product safety**  
 Our modular room solutions fulfill high safety and quality standards. We rely on carefully selected materials, proven standards, and sophisticated product development. Comprehensive testing ensures that our products fulfill all performance and safety requirements and deliver long-lasting reliability.

## Compliance and integrity

### 03 Governance



**Compliance and integrity**  
 For us, compliance is about more than just observing legal requirements. It's also about following internal rules and embracing ethical principles in our daily work. As a family-run company, we associate clear values with responsible behavior. Integrity is reflected in fair decisions and transparency. We have a clear stance on misconduct – across all levels.



**Whistleblower system**  
 We provide access to a safe, confidential, and anonymous whistleblower system that allows people to report potential violations of legal or ethical standards. The system ensures structured processing and protects whistleblowers from retaliation. All reports are carefully assessed to prevent misconduct, improve processes, and promote a positive corporate culture based on integrity.



**Transparency and progress**  
 Transparent communication is essential for trust and further development. We published our first Sustainability Report for the 2024 financial year, which documents progress and measures taken in the area of ESG. We're committed to open, clear communication, which helps us to further pursue our objectives and move in the right direction – for success over the long term.



“With our circular business model, we're already embracing many sustainable business practices today. But we're well aware that sustainability is not a goal in itself, but rather a process. We continue to develop – in terms of our ESG targets and in compliance with our values.”

Pia Albers  
 Managing Director of ELA Container

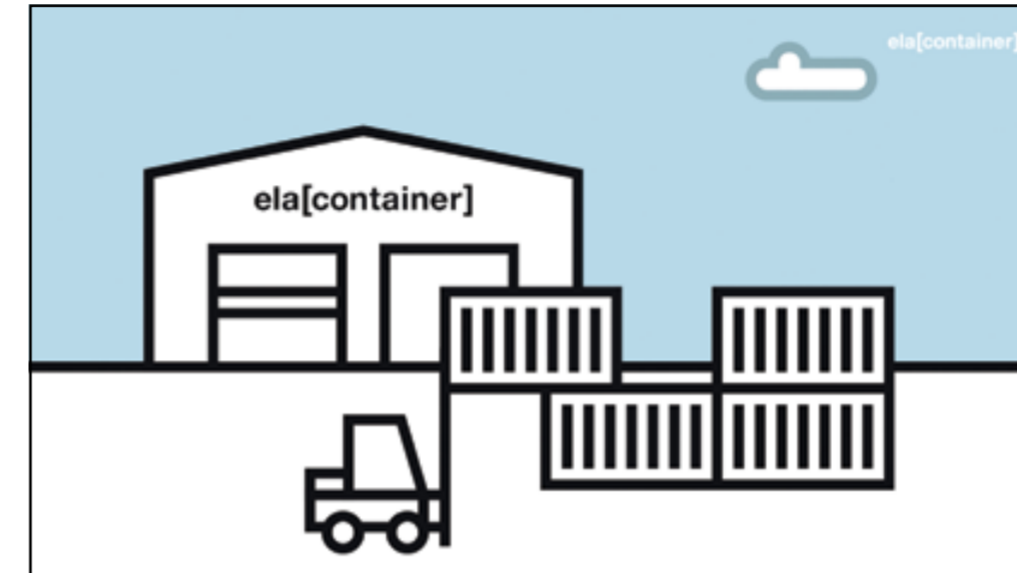
Pia Albers (right), who represents sustainability in the ELA management, worked with Isabell Rosenögger (left), Group Lead Sustainability, and a variety of ELA departments on the first comprehensive Sustainability Report.



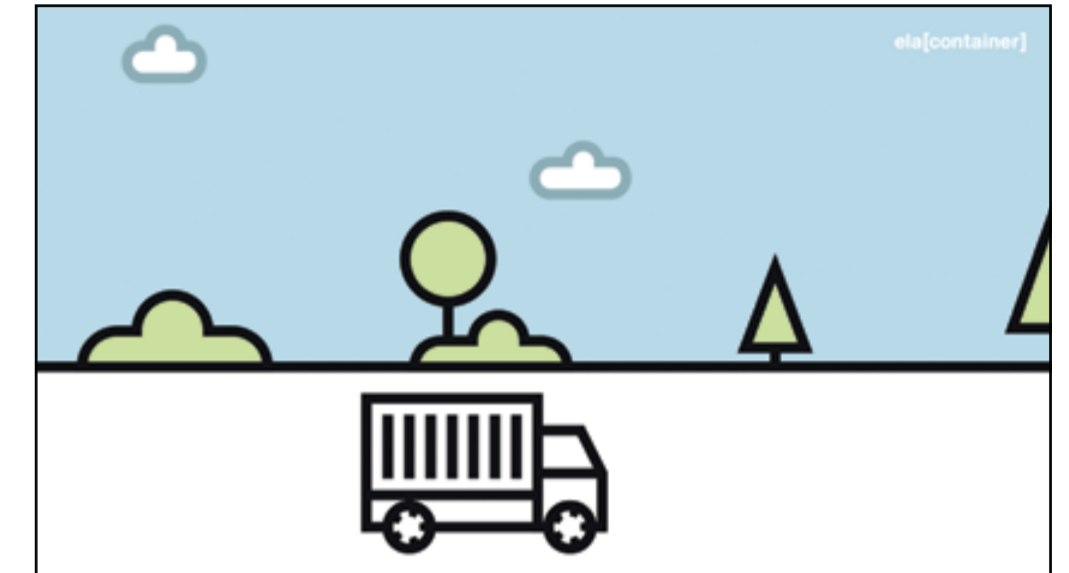
# SUSTAINABLE CONTAINER-BASED ROOM SOLUTIONS

We highlight the fact that our room solutions remain in use over decades and are always supporting new projects – rather than being used just once.

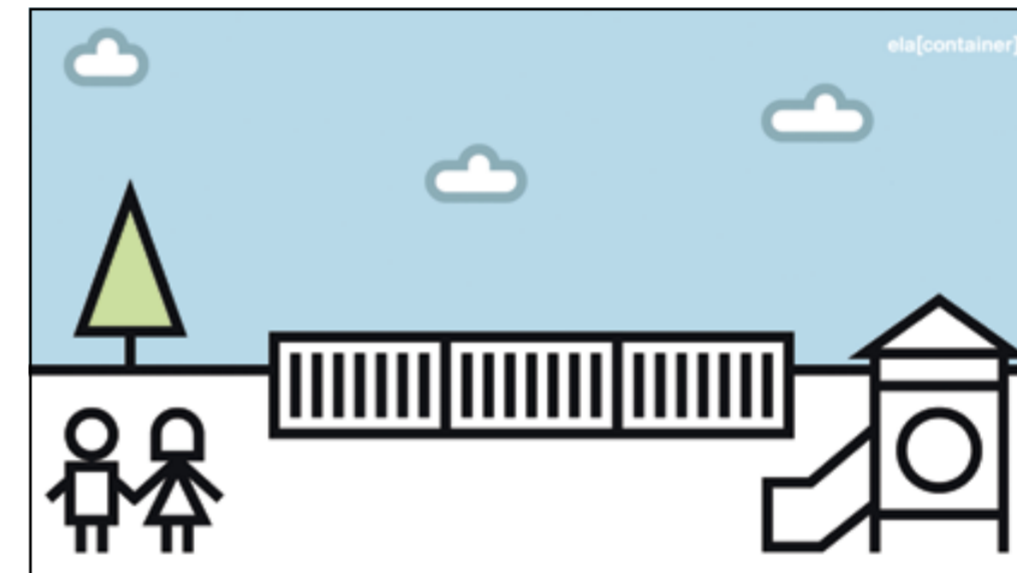
[Watch video](#)  
 Simply scan the QR code.



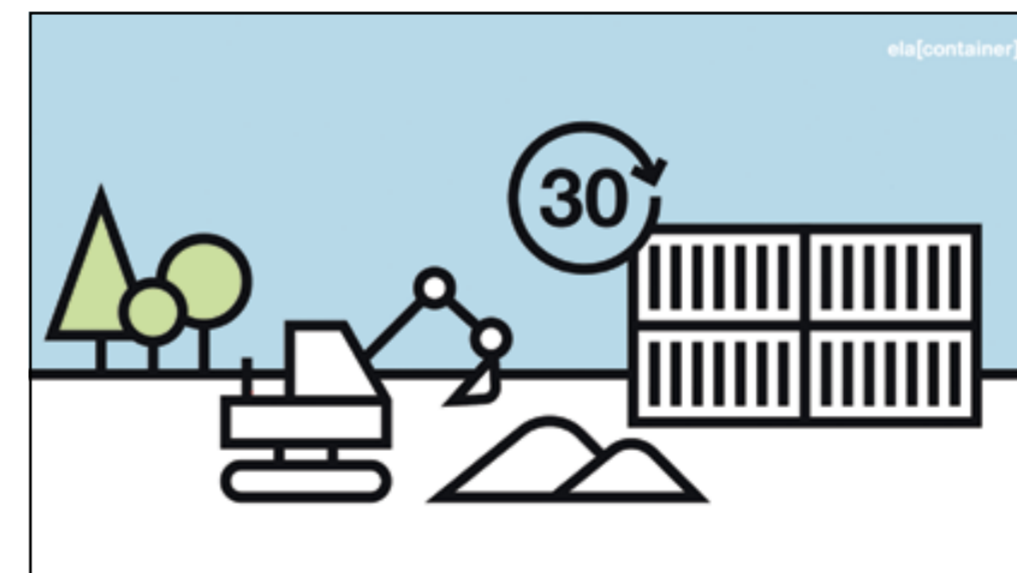
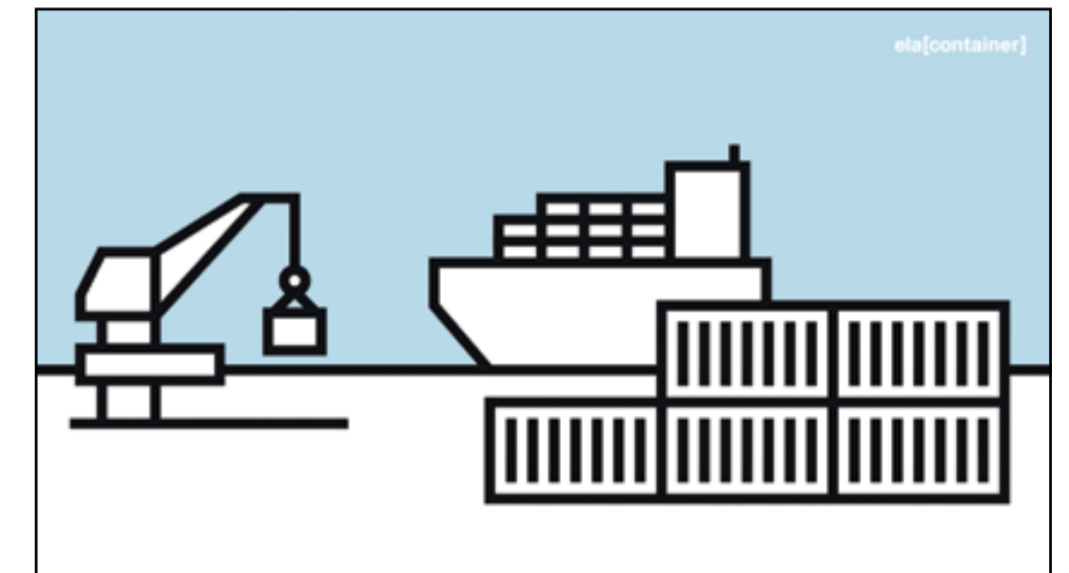
[ 1 ] Because they're reusable, our mobile room solutions are extremely resource-efficient and eco-friendly.



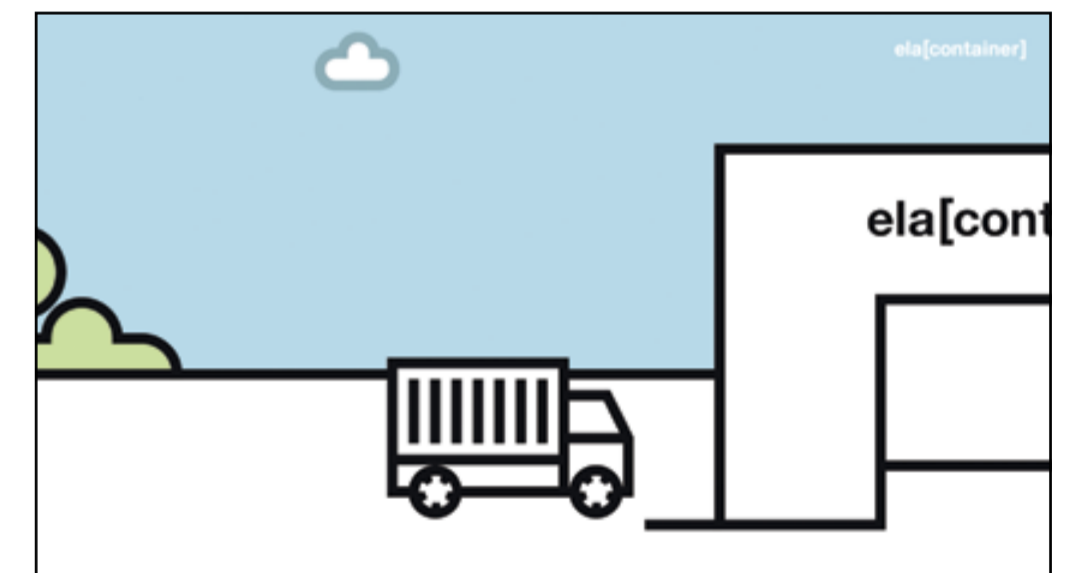
[ 2 ] Our containers travel the shortest distance possible between our locations and the site where they're needed over the short or long term.



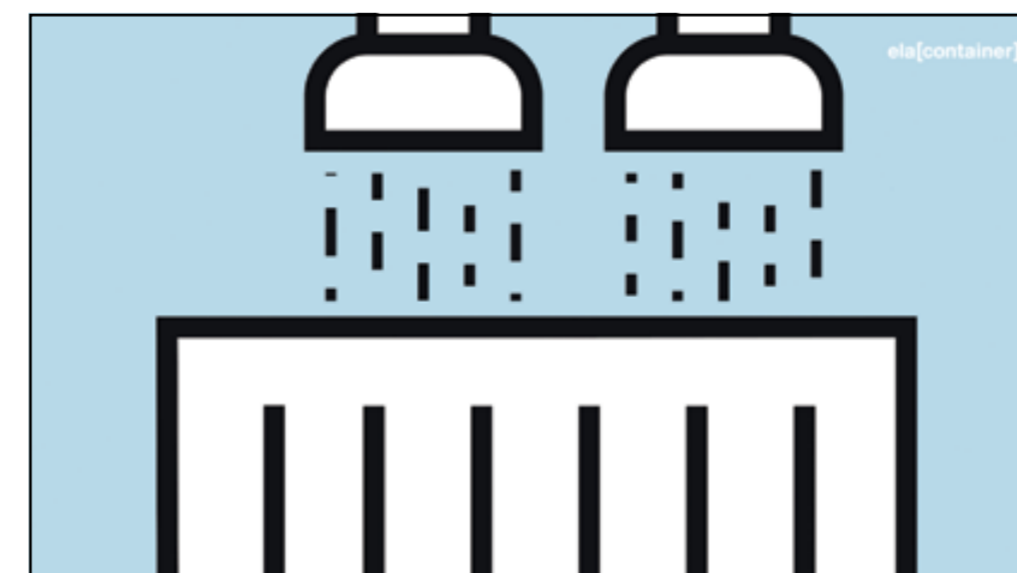
[ 3 ] and [ 4 ] Our containers are versatile, which makes them suitable for use across all industries and for just about any purpose.



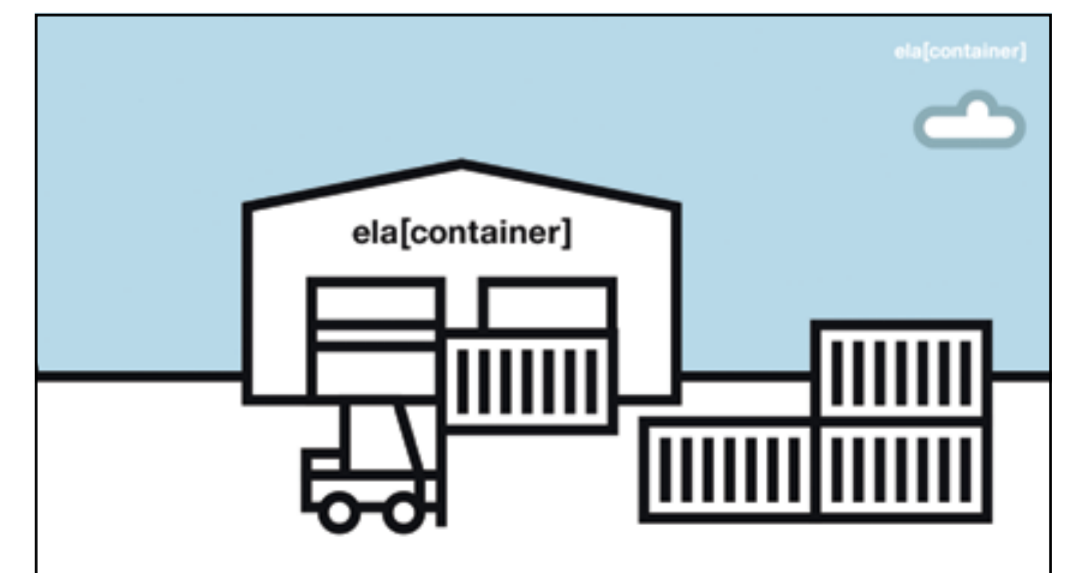
[ 5 ] Thanks to their robust design, our containers can be used for up to 30 years, which reduces environmental impact throughout the entire product life cycle.



[ 6 ] If the containers are no longer needed, we'll pick them up again and return them to one of our locations.

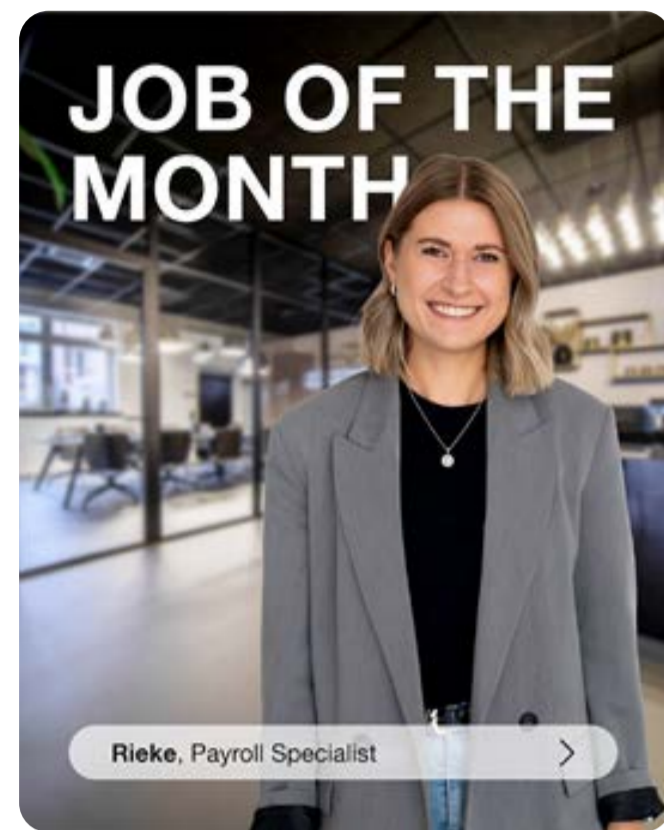
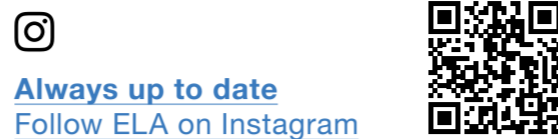


[ 7 ] There, the containers are cleaned and prepared for future use.



[ 8 ] Then they'll be ready for their next assignment, and thus the cycle will begin once again.

# SOCIAL INSIGHTS @ELA



## Job of the month

With the "Job of the month" social media series, we highlight a position at ELA every month. Employees provide brief, authentic insights into their responsibilities as well as the requirements and development opportunities associated with their jobs. At the same time, we highlight suitable job vacancies – for seasoned professionals and entry-level candidates.

## Behind the scenes – internal events and projects

Our social media channels regularly provide insights into our internal events and projects – whether it's job fairs, anniversary celebrations, or international sales conferences – with a focus not only on agenda items and organizational highlights, but also on the core elements of our corporate culture: team spirit, an easy-going atmosphere, international collaboration, and exchange beyond location borders.



## Training at ELA

Our creative formats and training content target students as well as young people about to launch their career. We provide insights into a variety of training occupations and integrated degree courses and show what it might look like to get started with ELA.

We draw on current social media trends like the "narrator trend" to connect with younger target groups and take fear out of the equation.



Training occupations and integrated degree courses – the application process for 2027 starts in July 2026:

- + IT specialist – application development
- + IT specialist – system integration
- + IT specialist – data and process analysis
- + Industrial management assistant
- + Freight forwarding and logistics services clerk
- + Cook/chef
- + Digital and print media designer
- + Electronics technician for energy and building technology
- + Metalworker specializing in construction technology
- + Technical systems planner specializing in steel and metal construction technology
- + Integrated degree course in business administration and sustainable management (B. A.)
- + Integrated degree course in industrial engineering and sustainable development (B. Eng.)
- + Integrated degree course in business informatics and sustainable IT (B. Sc.)

More information:  
[karriere.container.de](https://karriere.container.de)  
[career.ela-container.com](https://career.ela-container.com)



## "We are hiring" on LinkedIn

Once a month, we present a selection of job vacancies on LinkedIn that are especially relevant for us at that moment. By highlighting these positions, we have the opportunity to speak directly to qualified specialists and managers in a professional networking environment.

At the same time, we provide a little insight into the extraordinary diversity of jobs at ELA, from technical and trade to administrative roles.



## Office comedy and trainee challenges on TikTok

With short humorous formats and interactive challenges, we draw on current trends and typical work situations on TikTok and show employees in authentic and often tongue-in-cheek moments.

## Collaboration and external projects



We even follow special external projects and collaborations on our social media channels, providing insight into exciting ELA initiatives. One example is the partner project with Red Bull focusing on a spectacular motocross jump. In addition to highlights of the event itself, we also shared behind-the-scenes moments and interviews, allowing our followers to experience what happened behind the curtains and who was involved in the project.

## Trends and challenges

We like to draw on current social media trends and challenges that complement our company values. One example is the 2025 tree-planting challenge, during which Pia and Fabio, our next generation, symbolically put down roots – to highlight our focus on the future and sustainable thinking.



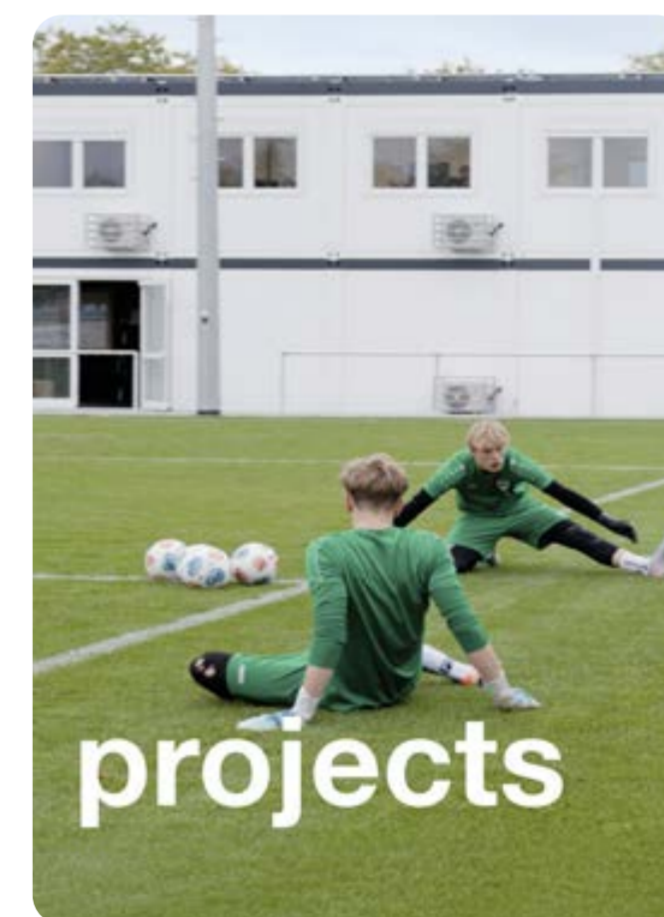
# 2026 TRADE FAIR CALENDAR

## Trade shows

June
<b>Real Estate Arena</b> June 10–11, 2026, Hannover Messe Nord
<b>OstBau</b> June 18–20, 2026, Bernau bei Berlin
September
<b>NordBau</b> September 9–13, 2026, Holstenhallen Neumünster
November
<b>KOMMUNAL</b> November 18–19, 2026, Messe Erfurt

## Behind the scenes – external events and trade fairs

ELA is regularly represented at national and international trade fairs and industry events, from recruiting events to large trade fairs like bauma in Munich. Our followers experience our external events in the form of insights into stand concepts and personal conversations on-site. In this way, anyone who's interested can take part in the activities in digital form.



## ELA Projects – video series on YouTube

In our "ELA Projects" format, we regularly publish project documentation on YouTube and share it on other social media channels. The videos show our room solutions in concrete applications and provide realistic insight into planning, implementation, and use.

Customers provide a firsthand look at collaboration with ELA and share their experiences from across the project. These videos also reveal just how versatile our container solutions are, with applications ranging from day care centers and office systems to modern training centers for professional soccer.

## Job fairs

May
<b>Career Day Uni Oldenburg</b> May 12, 2026, University of Oldenburg
June
<b>Vocatum Emsland/Grafschaft Bentheim</b> June 24, 2026, Emslandhallen Lingen
September
<b>BIB trade fair in Papenburg</b> September 24, 2026, BBS Papenburg
October
<b>BIB trade fair in Meppen</b> October 1, 2026, BBS Meppen
<b>BIB trade fair in Lingen</b> October 8, 2026, Messe Lingen
<b>Ems-Achse career day</b> October 14, 2026, FH Emden/Leer

## November

<b>Business Day 2026</b> November 4, 2026, FH Münster
<b>CHANCE Osnabrück</b> November 10–12, 2026, FH Osnabrück

# FROM EMSLAND TO THE WORLD

### Expansion of our sales activities at home and abroad



With the targeted expansion of our sales structure, we're consistently promoting national and international expansion. In addition to further consolidating our domestic market, we're increasing our focus on northern European countries like Denmark, Sweden, and Norway.

Another milestone is the opening of our national location in Trappenkamp in the state of Schleswig-Holstein, from which we will manage our sales activities for Northern Europe and create the structural foundation for systematically developing the markets over the long term with a focus on customers. The new location shortens distances, accelerates response times, and intensifies support for our partners and customers in the region.

Image above

ELA Container is represented by 18 locations in eleven European countries.

# ELA VENTURES INTO SWEDEN

## Sweden

When the Eurovision Song Contest was held in Malmö in 2024, countless servers were housed in large metal containers and threatened to overheat. Filip Dahlin, who's responsible for the Nordic countries at ELA, was on a business trip at that time when he had to organize a solution. "We as a company are a little like a cat," he says, looking back. "We always land on our feet." ELA is always demonstrating the flexibility that Filip is referring to in cases like these – and it's no different in the relatively new Swedish market.

ELA has had a location in Sweden since 2023. Filip views the new activities in Sweden as the result of favorable momentum. After all, expansion into the Nordic countries had already begun in Denmark in 2021 and been successful so far. Due to the company's close proximity to Copenhagen and Malmö, the activities also grew in Sweden. "The reference and experience from another Nordic country helped us in Sweden," he says.

## A strategic partnership for a head start

To expand our presence in this focus market, we formalized the partnership with the Swedish construction company Otto Magnusson in late 2023. The collaboration covers container production, modification, and rental as well as transport to Sweden and Denmark. To allow customers to experience our room solutions firsthand, we created a container showroom at the Otto Magnusson location in Malmö consisting of three modules set up to be office and meeting rooms. In addition, another container system with two floors was opened in Jönköping in 2025 that serves as a sales office and showroom and features office and meeting rooms, a kitchen, and a sanitary area. The showroom therefore provides customers in the construction, energy, and municipal sectors with the opportunity to experience a practical work environment.

## The expansion proved to be challenging

But expansion into Sweden also brought about some challenges, as there are other providers in the country, though they primarily use containers made of wood. Convincing companies of the benefits of steel containers required trust – something you have to earn in Sweden. There were also geographic difficulties. Filip had always known that Sweden was a vast country, but it wasn't until the expansion that he came to appreciate just how vast it truly is. The further north the ELA containers were needed, the more complicated and expensive it became to transport them from the production facility in Lower Saxony.

## The effects of expansion into Sweden

Now that there are ELA Container representatives all over Sweden, Filip can turn his focus to the rest of the north. ELA already has individual activities going on in Finland. Due to its road infrastructure, Norway poses a few of its own challenges, says Filip. But he's sure of one thing: "We'll soon be represented throughout the north."



Filip Dahlin, Head of Sales Nordics



01



02



03

Image 01

The ELA Showroom in Malmö was set up at Otto Magnusson's location in 2023.

Image 02

A second container system in Jönköping has served as a showroom and sales office since 2025.

Image 03

Meeting rooms, offices, and lounge areas can be viewed at both showrooms.

The Trappenkamp location – a strong foundation for the future

# A NEW BRANCH IN NORTHERN GERMANY

Image above

The ELA location, including showroom, in Trappenkamp, Schleswig-Holstein.

Image 01

Around a thousand guests attended the grand opening in early October 2025.

Image 02

View inside the large warehouse and production area.



01



02

We celebrated the grand opening of our new location in Trappenkamp with around a hundred guests, including business partners, customers, and employees.

In a space measuring 69,000 m<sup>2</sup>, the location now offers modern office spaces, 4,200 m<sup>2</sup> of hall space, and a showroom presenting the many different ways in which ELA containers can be used. As a result, we've created optimal conditions for serving our customers in northern Germany and Scandinavia even better and faster.

"We're proud of what we've achieved here in recent months. Step by step, an idea has evolved into a busy location with modern workstations, spacious warehouse and production facilities, and a showroom that highlights what ELA represents: quality, flexibility, and a focus on customers," says Site Manager Nico Gehrs.

Following the management's official opening remarks and thank-yous, guests were taken on a tour of the location's modern office and hall spaces. After the tour, guests had plenty of time to network and engage in personal conversations in a relaxed atmosphere, all the while enjoying snacks, hors d'oeuvres provided by a regional caterer, and coffee specialties prepared by a barista.

With the new location, we're continuing to pursue our successful expansion strategy in Northern Europe and investing in our regional presence in a targeted manner – all with the aim of boosting flexibility and customer focus.

# PROJECTS

From a compact room solution to a multilevel system, we can tailor spaces to a whole host of different requirements – for construction and energy projects, public sector clients, business, and industry. On the following pages, we present exciting projects that show how versatile ELA module room solutions are – and what they're capable of.

## 1 NCC, AARHUS

Open-plan office concept for a large construction site in Denmark

## 2 NORDFUEL, FRIESOYTHE

34 ELA room modules provide space for administration and a control room

## 3 THE LÄND, ROTTWEIL

Two-story info point for construction of a new correctional facility

## 4 ELA CAMPUS, HAREN

With Diner 72 and the elacademy, ELA is investing in community and knowledge at the head office

## 5 RWE, LINGEN

A hydrogen pilot project focused on the energy transition uses 240 ELA containers



# CONTAINER SYSTEM FOR INNOVATIVE BUILDING CONCEPTS

NCC construction site for dynamic urban development in Aarhus

Image above

The container system was positioned in direct vicinity of the construction site in the city center.

Image 01

The wood effect lends itself to a pleasant yet professional working environment.

Image 02

The bright, open lounge area is connected directly to the kitchen.

Image 03

The terrace offers space for relaxation and short breaks during the workday.



01



02



03

## Office system for NCC construction site in Aarhus

NCC is one of the leading construction companies in Northern Europe and relies on sustainable building practices and resource-efficient solutions in its large-scale projects. Many of these complex construction projects run for a number of years and require temporary yet flexible office, recreational, and functional spaces.

In Aarhus, the company needed a temporary construction site office during the full renovation of multiple residential buildings. NCC turned to ELA Container for a solution. The mobile rooms can be adapted to the requirements of the construction site, assembled and disassembled quickly, and even expanded as necessary. The result is modern office and recreational spaces designed to maintain professional working conditions and ensure efficient project implementation throughout the five-year construction phase.

"We are very pleased to be working with NCC Denmark and welcome their trust in our room solutions. With our versatile modules, high-quality equipment, and prompt availability, we can create a functional, comfortable, and sustainable environment on the large construction site," explains Martin Kristensen, Area Sales Manager at ELA Container.

The anthracite-colored container system is made up of 16 office containers, two sanitary containers, and two corridor containers. ELA also supplied desks and chairs for the offices in order to create a functional working environment. The two-story system also has internal staircases to provide short routes that are protected from the elements and offer greater comfort and security. The wood-effect vinyl flooring combines a heavy-duty, easy-to-clean surface with a warm, inviting look to create a pleasant working atmosphere without compromising on its high durability.

Daniel Overgaard Christensen, Senior Project Leader at NCC, underlines the importance of this partnership too: "We opted for ELA Container because we needed a solution that is both fast and reliable. With a whole host of configuration options to choose from, there's something for everyone, from a variety of furniture packages to custom interior designs in line with our specifications. We were impressed and are extremely satisfied with the solution we selected."

### Details

**Location**  
Aarhus, Denmark

**Responsible ELA location**  
ELA Container Denmark ApS, Denmark

**Room solutions**  
20 ELA office, corridor, and sanitary containers across two floors

**Usable space**  
360 m<sup>2</sup>

**Use**  
Construction site office building

**Color**  
Exterior walls: anthracite gray, RAL 7016  
Inner walls and ceiling: white

**Floor**  
Wood-effect vinyl

**Extra equipment**  
ELA furniture (tables and chairs), internal staircase, kitchenette, alarms, smoke alarms, split heating and air-conditioning units, cable ducts

**Purchased or leased**  
Leased

**Duration of use**  
5 years



Image above

The room solution for Nordfuel comprises 34 ELA containers with a total space of around 700 m<sup>2</sup>.

Image middle

A walkway made of concrete slabs leads through the green areas to the temporary building.

Image below

The two floors are connected by an interior stairwell as well as an additional staircase outside.

## Room solution for Nordfuel GmbH's administration and control room

In 2024, Nordfuel GmbH began operating one of Europe's largest and most state-of-the-art biomethane plants on the Coastal Canal in Friesoythe. The innovative production facility processes farm manure to produce energy. The associated office building is still in the construction phase. Nordfuel administration and control room employees will be accommodated in a comfortable ELA office container system until completion, for around 18 months.

"We have been involved in many energy sector projects," says ELA Project Manager Ralf Neelen. According to Neelen, ELA is particularly happy to support the regional generation of sustainable energy.

ELA's temporary room solution comprises 34 office, sanitary, kitchen, and corridor containers with a total usable space of nearly 700 m<sup>2</sup>. The two-story system features an interior stairwell and a steel staircase with platform. An awning over the entrance keeps the area dry from rain. Circumferential cable ducts on the inside allow the customer to customize the layout of their power and data cables. To ensure that employees can get to their offices without getting their feet wet, ELA laid a walkway made of concrete slabs. "Demanding projects like this one call for optimal solutions that are perfectly tailored to the conditions on-site," explains Neelen.

"Collaboration on planning, delivery, and handover proved to be a very efficient and enjoyable process," says Sina Wübben, Head of Production at Nordfuel. According to Wübben, ELA's response to all the customer's requirements was quick, professional, and effective.

## Details

**Location**  
Friesoythe, Germany

**Responsible ELA location**  
ELA Container GmbH, Haren (Ems)

**Room solutions**  
34 office, sanitary, kitchen, and corridor containers

**Usable space**  
700 m<sup>2</sup>

**Use**  
Office building with control room

**Color**  
Exterior walls: pebble gray, RAL 7032  
Inner walls and ceiling: white

**Floor**  
Vinyl, marbled gray

**Extra equipment**  
Cable duct, walkway made of concrete slabs, interior staircase, exterior staircase, platform, awning

**Purchased or leased**  
Leased

**Duration of use**  
18 months



Image above

The office container system in THE LÄND design offers a view of the construction site from the roof terraces.

Image middle

The info point is located right next to the construction site for the new Rottweil correctional facility.

Image below

Bright colors and large windows ensure lots of natural light and a cozy atmosphere inside.

## Details

**Location**  
Rottweil, Germany

**Responsible ELA location**  
ELA Container GmbH, Billigheim

**Room solutions**  
Three ELA office containers and two roof terraces on three floors

**Usable space**  
90 m<sup>2</sup> incl. roof terrace

**Use**  
Info point with observation platform

**Color**  
Exterior walls: sulfur yellow, RAL 1016,  
inner walls and ceiling: white

**Floor**  
Vinyl, marbled gray

**Extra equipment**  
Tables, chairs, lockers and cabinets,  
exterior stairs and a platform; decals on  
all exterior walls

**Purchased or leased**  
Leased

**Duration of use**  
2 years



## Info point for construction of a new correctional facility in Baden-Württemberg

THE LÄND is a comprehensive information and image campaign by the German state Baden-Württemberg to promote the quality of life and economic strength of this region in southwest Germany. The campaign also provides information about major projects such as the construction of a modern correctional facility in Rottweil. For the duration of the construction work, the state has rented an individually designed, two-floor room solution from ELA Container as an info point. Anyone interested can visit the unit to find out about the new Rottweil correctional facility and the progress of construction.

The info point consists of three ultra-wide ELA office containers and two roof terraces. From the observation platform, visitors have an excellent view of the construction site for the new correctional facility.

The color scheme for the ELA room modules in sulfur yellow and special decals featuring a logo and graphic elements reflect the communication design of the THE LÄND campaign. White walls, large windows, and an LED lighting concept make for a bright and friendly interior. In addition to electrical, heating, and fire safety features, the interior is also equipped with tables, padded stacking chairs, filing cabinets, double lockers, benches, and wardrobes.

"As always with ELA, we detailed everything with the customer in advance, delivered everything on schedule with our own trucks, and after assembly by our assembly team, handed everything over to the customer turnkey ready," says ELA Area Sales Manager Michael Rotzinger.



# ELA CAMPUS – COMPANY RESTAURANT AND TRAINING CENTER

Image above

The company restaurant features an anthracite gray facade with large windows for a modern look.

Image middle

The name Diner 72 combines the container's American origin with the year ELA was founded, 1972.

Image below

The Diner 72 team managed by chef Nils Ludewig.

## Diner 72, the company restaurant for breaks and meetings together

The Diner 72 company restaurant and the elacademy training center combine to create a modern campus at the ELA head office in Haren (Ems), which brings employees together and promotes interdepartmental exchange.

As the heart of the location, Diner 72, which opened its doors in 2024, is setting new benchmarks in terms of staff dining and a cozy ambience. The company restaurant is formed out of 31 containers and features around 470 m<sup>2</sup> of usable space, accompanied by a 90 m<sup>2</sup> terrace. Around 200 employees enjoy healthy and seasonal foods from regional suppliers here every day. The culinary selection has an international focus and is varied, from breakfast and alternating lunch menus to a fresh salad bar. Chef Nils Ludewig, who managed a restaurant in Haren for five years, was involved in planning Diner 72 and contributed his past experience from starred restaurants.

The company restaurant boasts an inviting, modern design with industrial elements. The room concept is complemented by an integrated industrial kitchen, a variety of dry and general storage facilities, and a delivery area for seamless processes in the background. Diner 72 also offers space for events of all kinds.

Berthold Röttger, Director of Human Resources, emphasizes the importance of the company restaurant for ELA: "We'd like to help keep employees healthy and active, which is why we're so happy to have established Diner 72."

## Details

**Location**  
Haren (Ems), Germany

**Responsible ELA location**  
ELA Container GmbH, Haren (Ems)

**Room solutions**  
31 restaurant, kitchen, storage, and sanitary containers

**Usable space**  
470 m<sup>2</sup> + 90 m<sup>2</sup> terrace

**Use**  
Company restaurant

**Color**  
Exterior walls: anthracite gray, RAL 7016  
Inner walls and ceiling: white

**Inner walls and ceiling:**  
smooth galvanized steel sheets

**Extra equipment**  
Custom interior design, furniture, wall and ceiling finishes, ceiling-mounted air-conditioning units, fully glazed panels, barrier-free access with ramp, glazed double door, industrial kitchen

[Watch video](#)  
[Simply scan the QR code.](#)



01



02

# “We cook healthy and seasonal dishes for around 200 employees every day.”

Nils Ludewig  
Chef and company restaurant manager



03



04

Image 01

The daily menus are a huge hit with employees.

Image 02

The spacious industrial kitchen provides the kitchen team with a professional working environment.

Image 03

The outside space with terrace is a great place to enjoy the outdoors – weather permitting.

Image 04

The large dining space can accommodate up to 155 guests.



Image above

Training room on the upper floor with acoustic panels for a pleasant ambience.

Image middle

Entrance area with bar and seating for relaxing breaks.

Image below

The sunny outdoor terrace combines Diner 72 and elacademy to form the ELA Campus.

## Innovative elacademy training center

Located next door to Diner 72, the elacademy is another highlight on the ELA Campus. The training building was originally located at another location, but has since been relocated and expanded in order to keep up with the growing demand for training space. In the process, an additional three containers were added to the system, which now features 14 room modules on two floors with around 240m<sup>2</sup> of usable space.

Versatile and practical, the new rooms offer optimal conditions and can accommodate all internal training courses and meetings. The elacademy features two large training rooms, each of which holds 14 to 18 people. There's also a room for video productions, two individual cubicles for focused work, and an additional office. A spacious lounge space with bar in the entrance area creates an open, communicative atmosphere and promotes conversation during breaks.

Here, too, the modern exterior design complements the overall look of the campus. Barrier-free access ensures unlimited use, while an external blind system enables targeted light regulation and lets in plenty of natural light through the large windows.

"I'm so proud of the new splendor we were able to give the elacademy, and I'm delighted that our employees will be able to take advantage of all the wonderful benefits," says Hanna Busmann, Head of Learning & Talent Development.

## Details

**Location**  
Haren (Ems), Germany

**Responsible ELA location**  
ELA Container GmbH, Haren (Ems)

**Room solutions**  
14 ELA training, office, lounge, and sanitary containers

**Usable space**  
240 m<sup>2</sup>

**Use**  
Training center

**Color**  
Exterior walls: anthracite gray, RAL 7016  
Inner walls and ceiling: white

**Floor**  
Wood-effect vinyl

**Extra equipment**  
Split heating and air-conditioning units, floor-to-ceiling windows, sunscreen roller blinds, glazed double door



[Watch video](#)  
[Simply scan the QR code.](#)



Image above

Eight systems on up to four floors meet RWE's space requirements for the construction phase.

Image below

To save space, the floors of the construction container systems are connected via external staircases.



## Construction container systems for RWE's large-scale energy transition project

As part of the GET H2 Nukleus project, RWE has started laying the foundations for a transregional hydrogen infrastructure. A 14 MW electrolysis pilot plant was therefore commissioned in Lingen (Ems) that uses electricity to produce green hydrogen from renewable energy. Hydrogen from the large-scale project will be supplied to industrial customers via the planned hydrogen core network. For the building phase of the Nukleus project, ELA provided eight construction container systems between 15 and 720 m<sup>2</sup> in size. A total of 214 room modules with a combined space of 3,614 m<sup>2</sup> were planned to meet requirements.

The functional areas of the ELA space solutions provide office space for on-site management and third-party contractors, training rooms for safety instruction, lounge and break areas for employees, the necessary changing rooms and sanitary areas, and a kitchen. The rooms are equipped with all the necessary furniture and IT and electrical equipment and have split heating and air-conditioning units. "One of the project's main challenges was to meet the high safety requirements," says ELA Project Manager Neelen. Working closely with the customer, we were able to solve all the problems as well as deliver, set up, and hand over the systems on time.

Raphael Albers, Site & Commissioning Manager at RWE Technology International, confirms the constructive teamwork: "During this project, ELA Container proved to be highly innovative and very solution-oriented. The customer service is excellent, and the delivery times were fast."

## Details

**Location**  
Lingen (Ems), Germany

**Responsible ELA location**  
ELA Container GmbH, Haren (Ems)

**Room solutions**  
214 office, training, lounge, changing, sanitary, and kitchen containers, divided into eight container systems

**Usable space**  
3,614 m<sup>2</sup>

**Use**  
Construction site office, changing rooms, lounges, gatekeeper area, and safety instruction

**Color**  
Exterior walls: pebble gray, RAL 7032  
Inner walls and ceiling: white

**Floor**  
Vinyl, marbled gray

**Extra equipment**  
Furniture packages, exterior staircase, platforms, split heating and air-conditioning units, cable ducts

**Purchased or leased**  
Leased

**Duration of use**  
2 years



# DE

## **ELA Container GmbH Zentrale**

Zeppelinstraße 19–21  
49733 Haren (Ems)  
Tel. +49 5932 506-0  
Fax +49 5932 506-10  
www.container.de  
info@container.de

## **ELA Container GmbH Groß Ippener**

Am Gewerbegebiet 35  
27243 Groß Ippener  
Tel. +49 4224 1414-300  
Fax +49 4224 1414-310  
www.container.de  
info@container.de

## **ELA Container GmbH Frankenberg**

Dittersbacher  
Gewerbering 7  
09669 Frankenberg  
Tel. +49 37206 851-0  
Fax +49 37206 851-10  
www.container.de  
info@container.de

## **ELA Container GmbH Billigheim**

Schefflenzstraße 84  
74842 Billigheim  
Tel. +49 6265 92775-0  
Fax +49 6265 92775-10  
www.container.de  
info@container.de

## **ELA Container GmbH Moosburg**

Naustraße 1  
85368 Moosburg  
Tel. +49 8762 7266-800  
Fax +49 8762 7266-810  
www.container.de  
info@container.de

## **ELA Container GmbH Tönisvorst**

Lenenweg 12  
47918 Tönisvorst  
Tel. +49 2151 7086-0  
Fax +49 2151 7086-11  
www.container.de  
info@container.de

## **ELA Container GmbH Trappenkamp**

Ricklinger Straße 7  
24610 Trappenkamp  
Tel. +49 4323 92189-0  
Fax +49 4323 92189-10  
www.container.de  
info@container.de

## **ELA Container GmbH Gebraucht-Container- Center**

Im Industriepark 20 –  
Eurohafen  
49733 Haren (Ems)  
Tel. +49 5932 506-556  
Fax +49 5932 506-10  
www.container.de/  
gebraucht  
kontakt@ela-sales.de

## **ELA Container Sales GmbH**

Im Industriepark 20 –  
Eurohafen  
49733 Haren (Ems)  
Tel. +49 5932 506-339  
Fax +49 5932 506-10  
www.container24.de  
kontakt@ela-sales.de

## **ELA Container Offshore GmbH**

Zeppelinstraße 32  
49733 Haren (Ems)  
Tel. +49 5932 7323-500  
Fax +49 5932 7323-510  
www.ela-offshore.com  
info@ela-offshore.com

# AT

## **ELA Container Austria GmbH**

Emesbergstraße 7  
4643 Pettenbach  
Tel. +43 7586 21501  
www.ela-container.at  
info@ela-container.at

# BE

## **ELA Container Belgium BV**

Kantoor 002  
Luxemburgstraat 20  
9140 Temse  
Tel. +32 3 7719669  
www.ela-container.be  
info@ela-container.be

# CH

## **ELA Container Switzerland GmbH**

Hasenmoosstrasse 58  
6023 Rothenburg  
Tel. +41 79 891 45 31  
www.ela-container.ch  
info@ela-container.ch

# DK

## **ELA Container Denmark ApS**

Korsvej 4  
6000 Kolding  
Tel. +45 3114 0288  
www.ela-container.dk  
info@ela-container.dk

# NL

## **ELA Container Nederland B.V.**

Rouaanstraat 39  
9723 CC Groningen  
Tel. +31 50 3182247  
Fax +31 50 3185129  
www.ela-container.nl  
info@ela-container.nl

# PL

## **ELA Container Polska Sp. z o.o.**

ul. Łukasiewiczza 6  
05-200 Wołomin  
Tel. +48 22 2729500  
Fax +48 22 4688700  
www.ela-container.pl  
info@ela-container.pl

# SE

## **ELA Container Scandinavia AB**

Borrgatan 9  
211 24 Malmö  
Tel. +46 735251904  
www.ela-container.se  
info@ela-container.se

# UK

## **ELA Container UK Limited**

Staddlethorpe Broad  
Lane  
Gilberdyke  
Brough  
HU15 2TD  
Tel. +44 1724 608021  
www.ela-container.co.uk  
info@ela-container.co.uk

# WWW. ELA-CONTAINER. COM