

ela[container]

**Mobile
room solutions**

Quality all-rounder
With a width of 2.435 metres, this flexible container can be used to create any room



Characteristics
The ELA quality all-rounder is 2,435 mm wide. These standard container dimensions support the uncomplicated planning of new installations and the modification of existing systems. At the same time, the high-quality materials used for the container guarantee a service life far beyond standard expectations.

- Features**
- + Variable with ELA modular elements
 - + LED lighting
 - + Magnetic walls
 - + Windows with roller shutters
 - + Plug sockets
 - + Space-saving room design

 **ELA 360° Tour – Experience**
containers virtually



Premium container
3 metres wide with potential savings of up to 25 per cent



Characteristics
ELA premium containers have 20 per cent more space for living and working and thus lower costs by up to 25 per cent, as fewer containers are needed for the same usable area. With a width of 3 metres, it is half a metre wider than the ELA quality all-rounder. The additional 3 m² of space can accommodate larger layouts such as offices with three workstations instead of two.

- Features**
- + Variable due to ELA modular elements
 - + LED lighting
 - + Magnetic walls
 - + Windows with roller shutters
 - + Plug sockets
 - + Better ambience

 **ELA 360° Tour – Experience**
containers virtually



Sanitary container with optional wastewater tank
With WC and shower



Characteristics
Long-term workplaces and living areas require suitable sanitary areas. ELA quality all-rounders and premium containers are both available as sanitary containers – fully fitted with WC and urinals, sinks, showers and optional wastewater storage tanks. The optional wastewater tanks are not insulated.

- Features**
- + WC and urinal
 - + Hand washbasin and mirror
 - + Hot water storage
 - + Shower cubicle
 - + Wastewater tank

 **ELA 360° Tour – Experience**
containers virtually



First-aid containers
Rapid medical care



Characteristics
The ELA first-aid container is equipped with vanity including mirror and shelf, pedal bin, examination table with swivel stool, office table and chair with armrest and two large aid kits.

- Features**
- + Hand washbasin and mirror
 - + Privacy glass
 - + Examination table and swivel stool
 - + Office table and chair with armrest
 - + 2 large first-aid kits
 - + Optional: coat hook rail

 **ELA 360° Tour – Experience**
containers virtually



Storage containers
Secure, robust and practical



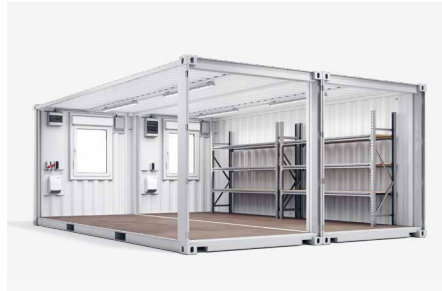
Characteristics
ELA storage containers protect valuable tools or materials, are ready to use at short notice, dry and spacious – optionally available with heavy-duty shelves, workbenches and complete electrical installations. The extremely stable 6 mm steel frame construction with ELA anti-theft devices provides reliable protection for the goods in storage.

- Features**
- + Stable, robust construction
 - + Plug socket and heavy current
 - + Anti-theft system
 - + Optional: Heavy-duty shelves, coat hook rail, workbench with vice, fire extinguisher, first-aid kit

 **ELA 360° Tour – Experience**
containers virtually



Workshop system
A compact, mobile workshop system



Characteristics
The ELA workshop system has a spacious usable area of 30 m² or 45 m², can be extended with any number of additional containers and is ready for immediate use with its extensive electrical installation and shelving plus optional workbench. The stable frame structure made of 6 mm steel with fully welded wall areas guarantees security and longevity.

- Features**
- + Stable, robust construction
 - + Windows
 - + 1 heavy duty shelf
 - + Electrical installation
 - + Anti-theft system
 - + Any number of adjacent containers can be combined
 - + Optional: electrical installation, workbench with vice, fire extinguisher, first-aid kit, coat hook rail

 **ELA 360° Tour – Experience**
containers virtually



Quality all-rounder

With a width of 2.435 metres, this flexible container can be used to create any room

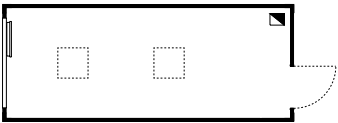


Flexible heating, ventilation and air conditioning

The modular concept makes it possible to fit the front end of a container with a modular frame. Where necessary, modular elements such as heaters, air-conditioning systems and panes of glass can be installed in the modular frame.

Modular elements
Blank element
Glass element
Split system
Gas heating
Electric heating

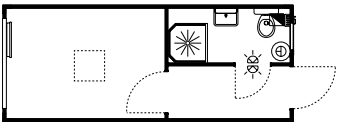
20 foot ELA quality all-rounder
Article: CF20H25-B00000



Dimensions
6,055 mm x 2,435 mm x 2,890 mm
Ceiling height: 2,500 mm

Equipment
+ 1 multipurpose exterior door, 875 mm x 2,000 mm, lock with Euro profile cylinder and 3 keys
+ min. 1 tilt-and-turn window, each 880 mm x 1.090 mm, with double glazing, aluminium roller shutter, anti-lifting device
+ Electrical installation, 400/230 V, 50 Hz
+ Electrical input and output, CEE 400 V/32 A
+ 2 LED lights, 40 W
+ Type F sockets and light switches
+ 2 empty junction boxes in the frame corners
+ Electric convector heater, 2 kW, with thermostat
+ Connected load: 2.1 kW
+ Optional: coat hook rail

20 foot ELA quality all-rounder with 1 shower/1 WC
Article: CF20H25-BDWC00

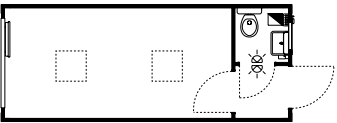


Dimensions
6,055 mm x 2,435 mm x 2,890 mm
Ceiling height: 2,500 mm

Equipment
as CF20H25-B00000 plus
1 shower/WC compartment

+ 1 WC
+ 1 hand washbasin
+ 1 shower cubicle
+ 1 hot water tank, 30 l, 2 kW
+ Mirror, tray, towel hook, toilet roll holder
+ 1 bathroom tilt window
+ 1 frost monitor, 0.5 kW
+ 1 hot water tank, 5 l, 2 kW
+ 2 LED lights, 18 W
+ DN 100 drain, pipe size 3/4 inch
+ Connected load: 4.6 kW

20 foot ELA quality all-rounder with 1 WC
Article: CF20H25-B1WC00

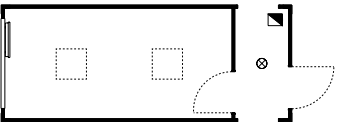


Dimensions
6,055 mm x 2,435 mm x 2,890 mm
Ceiling height: 2,500 mm

Equipment
as CF20H25-B00000 but with 1 additional WC compartment

+ 1 WC
+ 1 hand washbasin
+ 1 hot water tank, 5 l, 2 kW
+ Mirror, tray, towel hook, toilet roll holder
+ 1 bathroom tilt window
+ 1 frost monitor, 0.5 kW
+ 2 LED lights, 18 W
+ DN 100 drain, pipe size 3/4 inch
+ Connected load: 4.7 kW

20 foot ELA quality all-rounder with interior corridor
Article: CF20H25-B000F0

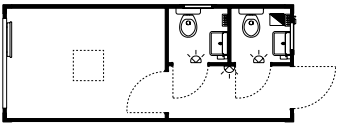


Dimensions
6,055 mm x 2,435 mm x 2,890 mm
Ceiling height: 2,500 mm

Equipment
as CF20H25-B00000 but with additional interior corridor area

+ Can be combined with additional ELA containers
+ Corridor with/without door
+ 1 LED light, 18 W
+ Connected load: 2.1 kW

20 foot ELA quality all-rounder with 2 WCs
Article: CF20H25-B2WC00

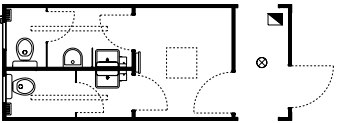


Dimensions
6,055 mm x 2,435 mm x 2,890 mm
Ceiling height: 2,500 mm

Equipment
as CF20H25-B00000 but with 2 additional WC compartments

+ 2 WCs
+ 2 hand washbasins
+ 2 hot water tanks, 5 l each, 2 kW each
+ Mirror, tray, towel hook, toilet roll holder
+ 2 bathroom tilt window
+ 2 frost monitors, 0.5 kW each
+ 3 LED lights, 18 W
+ DN 100 drain, pipe size 3/4 inch
+ Connected load: 7.1 kW

20 foot ELA quality all-rounder with 2 WCs (men/women)
Article: CF20H25-SDH1F0

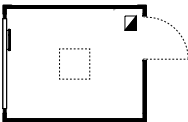


Dimensions
6,055 mm x 2,435 mm x 2,890 mm
Ceiling height: 2,500 mm

Equipment
as CF20H25-B00000 but with additional WC compartments for men and women

+ 2 WCs
+ 1 urinal
+ 2 hand washbasins
+ 2 hot water tanks, 5 l each, 2 kW each
+ Mirror, tray, towel hook, toilet roll holder
+ 2 bathroom tilt window
+ 2 frost monitors, 0.5 kW each
+ DN 100 drain, pipe size 3/4 inch
+ 1 LED light, 18 W
+ 2 surface-mounted LED lights, 29 W each
+ Electric convector heater, 1 kW, with thermostat
+ Connected load: 6.1 kW

10 foot ELA quality all-rounder
Article: CF10H25-B00000



Dimensions
2,990 mm x 2,435 mm x 2,890 mm
Ceiling height: 2,500 mm

Equipment
+ 1 multipurpose exterior door, 875 mm x 2,000 mm, lock with Euro profile cylinder and 3 keys
+ min. 1 tilt-and-turn window, each 880 mm x 1.090 mm, with aluminium roller shutter
+ Electrical installation, 400/230 V, 50 Hz
+ Electrical input and output, CEE 400 V/32 A
+ 1 LED light, 40 W
+ Type F sockets and light switches
+ 2 empty junction boxes in the frame corners
+ Electric convector heater, 1 kW, with thermostat
+ Connected load: 1.1 kW

Premium container

3 metres wide with potential savings of up to 25 per cent



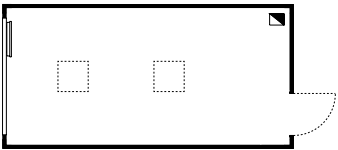
Flexible heating, ventilation and air conditioning

The modular concept makes it possible to fit the front end of a container with a modular frame. Where necessary, modular elements such as heaters, air-conditioning systems and panes of glass can be installed in the modular frame.

Modular elements
Blank element
Glass element
Split system
Gas heating
Electric heating

20 foot ELA premium container

Article: CF20H30-B00000



Dimensions

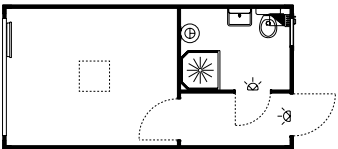
6,055 mm × 3,000 mm × 2,890 mm

Ceiling height: 2,500 mm

- Equipment**
- + 1 multipurpose exterior door, 875 mm × 2,000 mm, lock with Euro profile cylinder and 3 keys
 - + min. 1 tilt-and-turn window, each 1.170 mm x 1.090 mm, with double glazing, aluminium roller shutter, anti-lifting device
 - + Electrical installation, 400/230 V, 50 Hz
 - + Electrical input and output, CEE 400 V/32 A
 - + 2 LED lights, 40 W each
 - + Type F sockets and light switches
 - + 2 empty junction boxes in the frame corners
 - + Electric convector heater (2 kW) with thermostat
 - + Connected load: 2.1 kW
 - + Optional: coat hook rail

20 foot ELA premium container with 1 shower/1 WC

Article: CF20H30-BDWC00



Dimensions

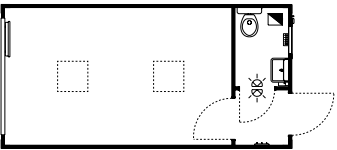
6,055 mm × 3,000 mm × 2,890 mm

Ceiling height: 2,500 mm

- Equipment**
- as CF20H30-B00000 but with 1 additional shower/WC compartment
- + 1 WC
 - + 1 hand washbasin
 - + 1 shower cubicle
 - + 1 hot water tank, 30 l, 2 kW
 - + Mirror, tray, towel hook, toilet roll holder
 - + 1 bathroom tilt window
 - + 1 frost monitor, 0.5 kW
 - + 2 LED lights, 18 W
 - + 1 hot water tank, 5 l, 2 kW
 - + DN 100 drain, pipe size 3/4 inch
 - + Connected load: 4.6 kW

20 foot ELA premium container with 1 WC

Article: CF20H30-B1WC00



Dimensions

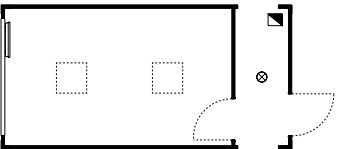
6,055 mm × 3,000 mm × 2,890 mm

Ceiling height: 2,500 mm

- Equipment**
- as CF20H30-B00000 but with 1 additional WC compartment
- + 1 WC
 - + 1 hand washbasin
 - + 1 hot water tank, 5 l, 2 kW
 - + Mirror, tray, towel hook, toilet roll holder
 - + 1 bathroom tilt window
 - + 1 frost monitor, 0.5 kW
 - + 2 LED lights, 18 W
 - + DN 100 drain, pipe size 3/4 inch
 - + Connected load: 4.7 kW

20 foot ELA premium container with interior corridor

Article: CF20H30-B000F0



Dimensions

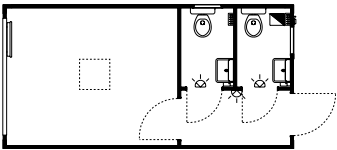
6,055 mm × 3,000 mm × 2,890 mm

Ceiling height: 2,500 mm

- Equipment**
- as CF20H30-B00000 but with additional interior corridor area
- + Can be combined with additional ELA containers
 - + Corridor with/without door
 - + 1 LED light, 18 W
 - + Connected load: 2.1 kW

20 foot ELA premium container with 2 WCs

Article: CF20H30-B2WC00



Dimensions

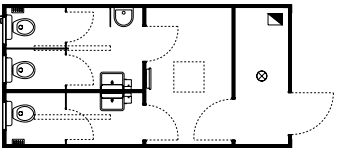
6,055 mm × 3,000 mm × 2,890 mm

Ceiling height: 2,500 mm

- Equipment**
- as CF20H30-B00000 but with 2 additional WC compartments
- + 2 WCs
 - + 2 hand washbasins
 - + 2 hot water tanks, 5 l each, 2 kW each
 - + Mirror, tray, towel hook, toilet roll holder
 - + 2 bathroom tilt window
 - + 2 frost monitors, 0.5 kW each
 - + 3 LED lights, 18 W
 - + DN 100 drain, pipe size 3/4 inch
 - + Connected load: 7.1 kW

20 foot ELA premium container with 3 WCs (men/women)

Article: CF20H30-B3WCF0



Dimensions

6,055 mm × 3,000 mm × 2,890 mm

Ceiling height: 2,500 mm

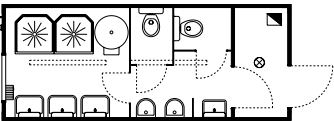
- Equipment**
- as CF20H30-B00000 but with additional WC compartments for men and women
- + 3 WCs
 - + 1 urinal
 - + 2 hand washbasins
 - + 2 hot water tanks, 5 l each, 2 kW each
 - + Mirror, tray, towel hook, toilet roll holder
 - + 3 bathroom tilt windows
 - + 2 frost monitors, 0.5 kW each
 - + 1 LED light, 18 W
 - + 2 surface-mounted LED lights, 29 W each
 - + Electric convector heater (1 kW) with thermostat
 - + DN 100 drain, pipe size 3/4 inch
 - + Connected load: 6.1 kW

Sanitary containers

Container with WC, shower or combination with a width of 2.435 metres



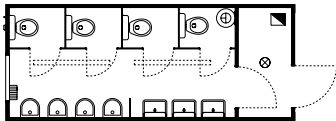
20 foot ELA sanitary container with 2 showers/2 WCs
Article: CF20H25-S000F0



Dimensions
6,055 mm × 2,435 mm × 2,890 mm
Ceiling height: 2,500 mm

- Equipment
- + 2 shower cubicles
 - + 2 WCs
 - + 2 urinals
 - + 4 hand washbasins
 - + Mirror, tray, towel hook, toilet roll holder
 - + 1 tilt-and-turn window, approx. 1,000 mm × 1,200 mm, decorative glazing, no roller shutter
 - + 1 fan heater, 2 kW
 - + DN 100 drain, pipe size 1 inch
 - + 1 hot water tank, 300l, 6 kW
 - + 1 LED light, 18 W
 - + 2 damp-proof, surface-mounted LED lights, 29 W each
 - + Connected load: 8.1 kW

20 foot ELA sanitary container with 4 WCs
Article: CF20H25-SWC4F0



Dimensions
6,055 mm × 2,435 mm × 2,890 mm
Ceiling height: 2,500 mm

- Equipment
- + 4 WCs
 - + 4 urinals
 - + 3 hand washbasins
 - + Mirror, tray, towel hook, toilet roll holder
 - + 1 tilt-and-turn window, approx. 1,000 mm × 1,200 mm, decorative glazing, no roller shutter
 - + 1 fan heater, 2 kW
 - + DN 100 drain, pipe size 1 inch
 - + 1 hot water tank, 30l, 2 kW
 - + 1 LED light, 18 W
 - + 2 damp-proof, surface-mounted LED lights, 29 W each
 - + Connected load: 4.1 kW

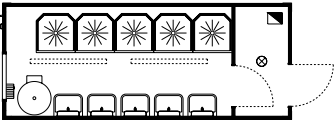
20 foot ELA sanitary container black/white
Article: CF20H25-SSW000



Dimensions
6,055 mm × 2,435 mm × 2,890 mm
Ceiling height: 2,500 mm

- Equipment
- + 1 shower cubicle
 - + 1 WC
 - + 1 hand washbasin
 - + 1 hot water tank, 30l, 2 kW
 - + Mirror, tray, towel hook, toilet roll holder
 - + 1 bathroom tilt windows
 - + 3 tilt-and-turn windows, approx. 1,000 mm × 1,200 mm, decorative glazing, no roller shutter
 - + 1 frost monitor, 0.5 kW
 - + 3 electric convector heaters with thermostat, 1 kW each
 - + DN 100 drain, pipe size 1 inch
 - + 3 LED panels with IR presence detectors, 11 W each
 - + 1 LED light, 18 W
 - + Connected load: 5.5 kW

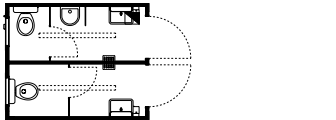
20 foot ELA sanitary container with 5 showers
Article: CF20H25-SDU5F0



Dimensions
6,055 mm × 2,435 mm × 2,890 mm
Ceiling height: 2,500 mm

- Equipment
- + 5 shower cubicles
 - + 5 hand washbasins
 - + Mirror, tray, towel hook
 - + 1 tilt-and-turn window, approx. 1,000 mm × 1,200 mm, decorative glazing, no roller shutter
 - + 1 fan heater, 2 kW
 - + DN 100 drain, pipe size 1 inch
 - + 1 hot water tank, 400l, 6 kW
 - + 1 LED light, 18 W
 - + 2 damp-proof, surface-mounted LED lights, 29 W each
 - + Connected load: 8.1 kW

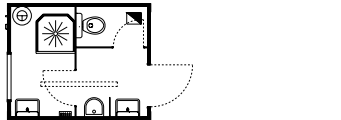
10 foot ELA sanitary container with 2 WCs (men/women)
Article: CF10H25-SDH100



Dimensions
2,990 mm × 2,435 mm × 2,890 mm
Ceiling height: 2,500 mm

- Equipment
- + 2 WCs (men/women)
 - + 1 urinal
 - + 2 hand washbasins
 - + 2 hot water tanks, 5l each, 2 kW each
 - + Mirror, tray, towel hook, toilet roll holder
 - + 2 bathroom tilt windows
 - + 2 frost monitors, 0.5 kW each
 - + DN 100 drain, pipe size 1 inch
 - + 2 damp-proof, surface-mounted LED lights, 29 W
 - + Connected load: 5.1 kW

10 foot ELA sanitary container with 1 shower/1 WC
Article: CF10H25-S00000



Dimensions
2,990 mm × 2,435 mm × 2,890 mm
Ceiling height: 2,500 mm

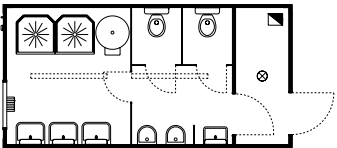
- Equipment
- + 1 shower cubicle
 - + 1 WC
 - + 1 urinal
 - + 2 hand washbasins
 - + 1 hot water tank, 30l, 2 kW
 - + Mirror, tray, towel hook, toilet roll holder
 - + 1 tilt-and-turn window, approx. 1,000 mm × 1,200 mm, decorative glazing, no roller shutter
 - + 1 frost monitor, 0.5 kW
 - + DN 100 drain, pipe size 1 inch
 - + 1 damp-proof, surface-mounted LED light, 29 W
 - + Connected load: 2.6 kW

Sanitary containers

Container with WC, shower or combination with a width of 3 metres



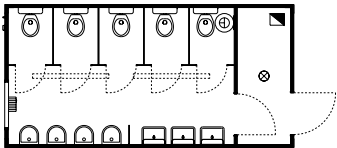
20 foot ELA premium sanitary container with 2 showers/2 WCs
Article: CF20H30-S000F0



Dimensions
6,055 mm × 3,000 mm × 2,890 mm
Ceiling height: 2,500 mm

- Equipment
- + 2 shower cubicles
 - + 2 WCs
 - + 2 urinals
 - + 4 hand washbasins
 - + Mirror, tray, towel hook, toilet roll holder
 - + 1 tilt-and-turn window, approx. 1,000 mm × 1,200 mm, decorative glazing, no roller shutter
 - + 1 fan heater, 2 kW
 - + DN 100 drain, pipe size 1 inch
 - + 1 hot water tank, 300l, 6 kW
 - + 1 LED light, 18 W
 - + 2 damp-proof, surface-mounted LED lights, 29 W each
 - + Connected load: 8.1 kW

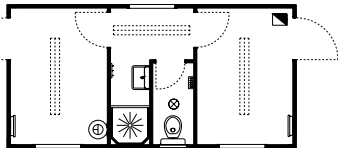
20 foot ELA premium sanitary container with 5 WCs
Article: CF20H30-SWC5F0



Dimensions
6,055 mm × 3,000 mm × 2,890 mm
Ceiling height: 2,500 mm

- Equipment
- + 5 WCs
 - + 4 urinals
 - + 3 hand washbasins
 - + Mirror, tray, towel hook, toilet roll holder
 - + 1 tilt-and-turn window, approx. 1,000 mm × 1,200 mm, decorative glazing, no roller shutter
 - + 1 fan heater, 2 kW
 - + DN 100 drain, pipe size 1 inch
 - + 1 hot water tank, 30l, 2 kW
 - + 1 LED light, 18 W
 - + 2 damp-proof, surface-mounted LED lights, 29 W each
 - + Connected load: 4.1 kW

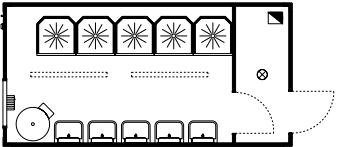
20 foot ELA premium sanitary container black/white
Article: CF20H30-SSW000



Dimensions
6,055 mm × 3,000 mm × 2,890 mm
Ceiling height: 2,500 mm

- Equipment
- + 1 WC
 - + 1 hand washbasin
 - + 1 shower cubicle
 - + 1 hot water tank, 30l, 2 kW
 - + Mirror, tray, towel hook, toilet roll holder
 - + 1 bathroom tilt window
 - + 3 tilt-and-turn windows, approx. 1,000 mm × 1,200 mm, decorative glazing, no roller shutter
 - + 1 frost monitor, 0.5 kW
 - + 3 electric convector heaters (1 kW each) with thermostat
 - + 3 LED panels with IR presence detectors, 11 W each
 - + 1 LED light, 18 W
 - + DN 100 drain, pipe size 3/4 inch
 - + Connected load: 5.5 kW

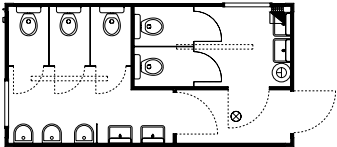
20 foot ELA premium sanitary container with 5 showers
Article: CF20H30-SDU5F0



Dimensions
6,055 mm × 3,000 mm × 2,890 mm
Ceiling height: 2,500 mm

- Equipment
- + 5 shower cubicles
 - + 5 hand washbasins
 - + Mirror, tray, towel hook
 - + 1 tilt-and-turn window, approx. 1,000 mm × 1,200 mm, decorative glazing, no roller shutter
 - + 1 fan heater, 2 kW
 - + DN 100 drain, pipe size 1 inch
 - + 1 hot water tank, 400l, 6 kW
 - + 1 LED light, 18 W
 - + 2 damp-proof, surface-mounted LED lights, 29 W each
 - + Connected load: 8.1 kW

20 foot ELA premium sanitary container with 5 WCs (men/women)
Article: CF20H30-SDH500



Dimensions
6,055 mm × 3,000 mm × 2,890 mm
Ceiling height: 2,500 mm

- Equipment
- + 5 WCs (men/women)
 - + 3 urinals
 - + 4 hand washbasins
 - + Mirror, tray, towel hook, toilet roll holder
 - + 2 tilt-and-turn windows, approx. 1,000 mm × 1,200 mm, decorative glazing, no roller shutter
 - + 2 frost monitors, 0.5 kW each
 - + DN 100 drain, pipe size 1 inch
 - + 1 hot water tank, 30 l, 2 kW
 - + 1 LED light, 18 W
 - + 2 damp-proof, surface-mounted LED lights, 29 W each
 - + Connected load: 3.1 kW

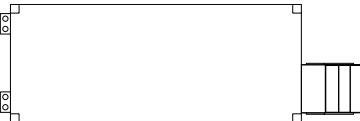
Sanitary containers

Accessories



20 foot wastewater tank

Article: TF10N25-TANK00

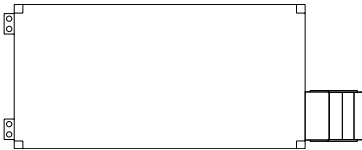


Dimensions
6,055 mm × 2,435 mm × 610 mm

- Equipment**
- + Compatible with ELA sanitary containers
 - + Capacity approx. 6,000 l
 - + Steel
 - + Pebble gray (RAL 7032) or anthracite gray (RAL 7016)
 - + Intake/discharge port
 - + Optional: set of two steps and additional handrail

20 foot premium wastewater tank

Article: TF20N30-TANK00

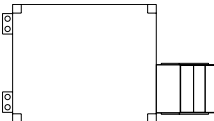


Dimensions
6,055 mm × 3,000 mm × 610 mm

- Equipment**
- + Compatible with ELA sanitary containers
 - + Capacity approx. 7,200 l
 - + Steel
 - + Pebble gray (RAL 7032) or anthracite gray (RAL 7016)
 - + Intake/discharge port
 - + Optional: set of two steps and additional handrail

10 foot wastewater tank

Article: TF10N25-TANK00



Dimensions
2,990 mm × 2,435 mm × 610 mm

- Equipment**
- + Compatible with ELA sanitary containers
 - + Capacity approx. 3,000 l
 - + Steel
 - + Pebble gray (RAL 7032) or anthracite gray (RAL 7016)
 - + Intake/discharge port
 - + Optional: set of two steps and additional handrail

Steps with handrail

Article: TTR-600X100



Dimensions
1,300 mm × 600 mm
Step width: approx. 1,000 mm

- Equipment**
- + Robust, galvanised design
 - + Can be attached to ELA wastewater tanks
 - + 2 grated steps, each 1,000 mm wide
 - + Integrated platform, 1,000 mm × 500 mm, with grating
 - + Handrails on both sides

Exterior lifting station

Article: CFAEKAL-SHEB



Dimensions
800 mm × 1,200 mm × 1,700 mm

- Equipment**
- + Plug connection, CEE 400 V/32 A
 - + Electrical sub-distribution with residual current circuit breaker and circuit breaker
 - + Frost monitor
 - + Lighting with movement sensors
 - + Jung Compli 400 lifting station
 - + DN 100 suction head, 290 mm
 - + Connected load: approx. 1.7 kW

Water tank

Article: ELA-00014511



Dimensions
720 mm × 1,400 mm × 1,400 mm

- Equipment**
- + Capacity 1,100 l
 - + Pump included
 - + DN 400 screw cap with fastener
 - + Coupling nut with 2 inch thread insert
 - + Galvanised steel bindings
 - + Moulded lower flange, closed

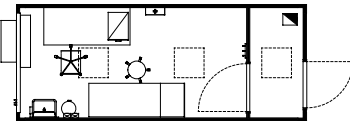
First-aid containers

Available in widths of 2.435 metres and 3 metres



20 foot first aid container

Article: CF20H25-BERH01

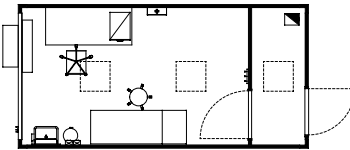


Dimensions
6,055 mm × 2,435 mm × 2,890 mm
Ceiling height: 2,500 mm

- Equipment**
as CF20H25-B00000 but with the following accessories:
- + 1 hand washbasin
 - + 2 dispensers for soap and disinfectant
 - + 2 first aid kits
 - + Examination table and swivel stool
 - + Pedal bin
 - + Office table and chair with armrest
 - + 1 mobile storage container
 - + Separate small corridor
 - + Split system
 - + Connected load: 2.1 kW
 - + Optional: coat hook rail

20 foot premium first aid container

Article: CF20H30-BERH01



Dimensions
6,055 mm × 3,000 mm × 2,890 mm
Ceiling height: 2,500 mm

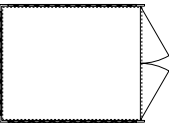
- Equipment**
as CF20H30-B00000 but with the following accessories:
- + 1 hand washbasin
 - + 2 dispensers for soap and disinfectant
 - + 2 first aid kits
 - + Examination table and swivel stool
 - + Pedal bin
 - + Office table and chair with armrest
 - + 1 mobile storage container
 - + Separate small corridor
 - + Split system
 - + Connected load: 2.1 kW
 - + Optional: coat hook rail

Storage containers

ISO-standard steel containers, spacious and durable



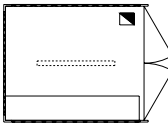
10 foot storage container
Article: CF10N25-M000



Dimensions
2,991 mm × 2,438 mm × 2,591 mm

- Equipment**
- + Heavy-duty double swing door
 - + Sturdy steel frame construction in 6 mm thick special profile
 - + Roof, side walls and end walls made of 1.5 mm thick, fully welded trapezoidal sheeting
 - + 8 ISO container corners
 - + Plywood glued multiple times over crosswise floor joists
 - + ELA anti-theft system
 - + Optional: coat hook rail, workbench with vice, fire extinguisher, first-aid kit,

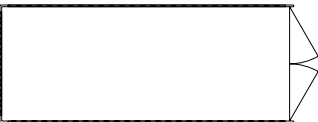
10 foot ELA storage container with shelves and electrical installation
Article: CF10N25-MREE



Dimensions
2,991 mm × 2,438 mm × 2,591 mm

- Equipment**
- as CF10N25-M000 but with the following accessories:
- + Electrical installation, 400/230 V, 50 Hz, IP44
 - + Electrical input and output, CEE 400 V/32 A
 - + Electrical sub-distribution with residual current circuit breaker and various circuit breakers
 - + 1 surface-mounted LED light, 29 W
 - + Type F sockets and light switches
 - + 1 wall outlet, CEE 400 V/32 A
 - + 1 heavy-duty shelf on the long side
 - + ELA anti-theft system
 - + Optional: Fan heater, 2 kW

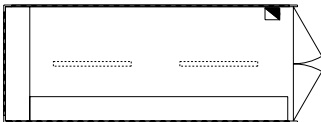
20 foot storage container
Article: CF20N25-M000



Dimensions
6,058 mm × 2,438 mm × 2,591 mm

- Equipment**
- + Heavy-duty double swing door
 - + Sturdy steel frame construction in 6 mm thick special profile
 - + Roof, side walls and end walls made of 1.5 mm thick, fully welded trapezoidal sheeting
 - + 8 ISO container corners
 - + Heavy timber floorboards (wood flooring) over the crosswise floor joists
 - + ELA anti-theft system
 - + Optional: coat hook rail, workbench with vice, fire extinguisher, first-aid kit

20 foot ELA storage container with shelves and electrical installation
Article: CF20N25-MREE



Dimensions
6,058 mm × 2,438 mm × 2,591 mm

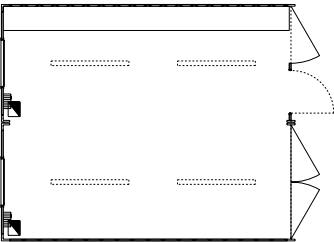
- Equipment**
- as CF20N25-M000 but with the following accessories:
- + Electrical installation, 400/230 V, 50 Hz, IP44
 - + Electrical input and output, CEE 400 V/32 A
 - + Electrical sub-distribution with residual current circuit breaker and various circuit breakers
 - + 2 surface-mounted LED lights, 29 W each
 - + Type F sockets and light switches
 - + 1 wall outlet, CEE 400 V/32 A
 - + Heavy-duty shelving on the long side (L profile)
 - + ELA anti-theft system
 - + Optional: Fan heater (2 kW)

Workshop system

Combination of two or three workshop containers for a larger capacity



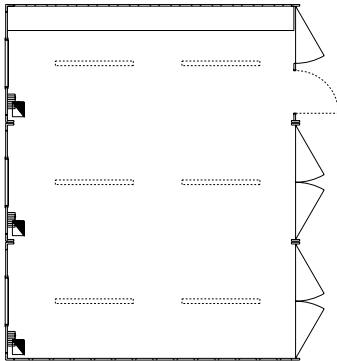
2 × 20 foot workshop containers
Article: R2C1G25-WERK



Dimensions
6,058 mm × 4,876 mm × 2,591 mm

- Equipment**
- + 1 half double swing door, 1 double swing door
 - + 1 stable, galvanised multipurpose exterior double swing door, 875 mm × 2,000 mm, lock with Euro profile cylinder and 3 keys
 - + Electrical installation, 400/230 V, 50 Hz, IP44
 - + Electrical input and output in each container, CEE 400 V/32 A
 - + Electrical sub-distribution with residual current circuit breaker and various circuit breakers
 - + 4 surface-mounted LED lights, 29 W each
 - + Type F sockets and light switches
 - + 1 wall outlet, CEE 400 V/16 A
 - + 1 wall outlet, CEE 400 V/32 A
 - + 1 heavy-duty shelf
 - + 2 fan heaters, 2 kW each
 - + ELA anti-theft system
 - + Optional: workbench with vice, fire extinguisher, first-aid kit, coat hook rail
 - + Connected load: 4.2 kW

3 × 20 foot workshop containers
Article: R3C1G25-WERK



Dimensions
6,058 mm × 7,314 mm × 2,591 mm

- Equipment**
- + 1 half double swing door, 2 double swing doors
 - + 1 stable, galvanised multipurpose exterior double swing door, 875 mm × 2,000 mm, lock with Euro profile cylinder and 3 keys
 - + Electrical installation, 400/230 V, 50 Hz, IP44
 - + Electrical input and output in each container, CEE 400 V/32 A
 - + Electrical sub-distribution with residual current circuit breaker and various circuit breakers
 - + 6 surface-mounted LED lights, 29 W each
 - + Type F sockets and light switches
 - + 1 wall outlet, CEE 400 V/16 A
 - + 1 wall outlet, CEE 400 V/32 A
 - + 1 heavy-duty shelf
 - + 3 fan heaters, 2 kW each
 - + ELA anti-theft system
 - + Optional: workbench with vice, fire extinguisher, first-aid kit, coat hook rail
 - + Connected load: 6.2 kW

Accessories

Optional accessories



Exterior stairs and platform
Direct access to the second level



Awning
Shields entrance areas from rain and sunlight



Sun circulation roof
Keeps the interior cool in sunny days



Sink
For cleanliness and hygiene



Full kitchenette
Everything you need for tea, coffee and a light snack



Dishwasher
Improved comfort for living and cooking



Anti-panic lock/knob (exterior)
Can be opened from inside at any time – for example, for emergency exits



Door security bar
For exceptionally high security requirements



Window grate
Break-in and vandalism prevention



Fridge
Storage space for fresh food and drinks



Microwave
For heating food and drinks quickly



Double hotplate
Classic equipment for kitchenettes and accommodation



Crush protection
Prevents children in particular from injuring themselves



Acoustic panel
For pleasant room acoustics, especially in offices and meeting rooms



Cable duct
For the fast and safe installation of data cables and electric wiring



First-aid box
The extensive kit for effective first aid



Fire extinguisher
Indispensable for fire prevention



Emergency kit
Always prepared for minor injuries



Site distribution board
Professional quality for a reliable electricity supply



Whiteboard
For effective teamwork in the container office – the whiteboard is magnetic.



Workbench
1,250 mm x 650 mm x 850 mm

Accessories
Furnishings



Filing cabinet
780 mm × 350 mm × 755 mm



Filing cabinet/wardrobe
800 mm × 520 mm × 1,800 mm



Sliding filing cabinet
1,200 mm × 420 mm × 780 mm



Table for 4 people
1,600 mm × 800 mm × 780 mm



Table for 6 people
1,800 mm × 800 mm × 780 mm



Desk, large
1,800 mm × 800 mm × 780 mm



Steel filing cabinet
800 mm × 380 mm × 1,800 mm



Steel double locker
500 mm × 500 mm × 1,900 mm



Wooden bench
1,500 mm × 400 mm × 430 mm



Mobile file cabinet
420 mm × 600 mm × 590 mm



Height-adjustable desk
Flexible and comfortable working while sitting or standing



Single wooden bed without foam mattress
2,000 mm × 900 mm × 600 mm



Padded chair
For comfortable seating



Stacking chair
Saves space when not in use



Swivel chair
Removable armrests and height-adjustable for flexible use



Single steel-frame bed without foam mattress
1,970 mm × 810 mm × 600 mm

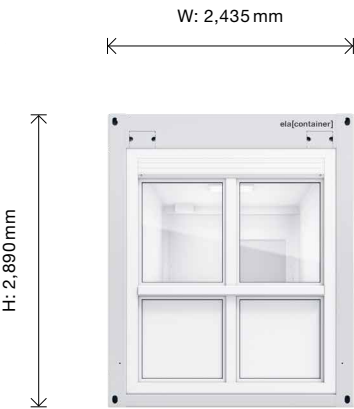


Steel-frame bunk bed without foam mattress
1,970 mm × 810 mm × 1,400 mm



Ergonomic office chair
Ideal seating comfort and individual adjustment options

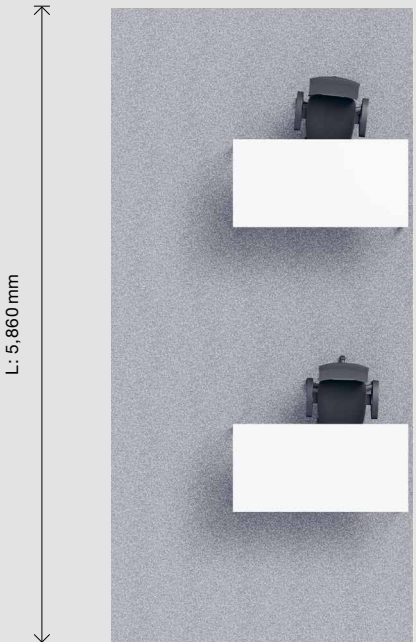
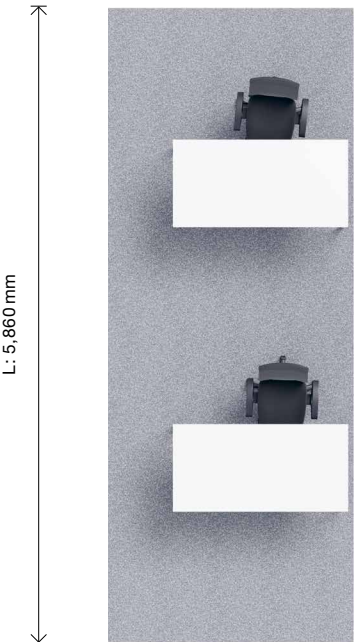
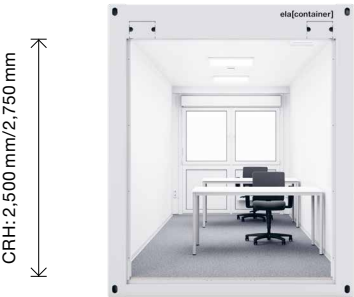
Potential savings
with 3-metre-wide containers



2,5 m

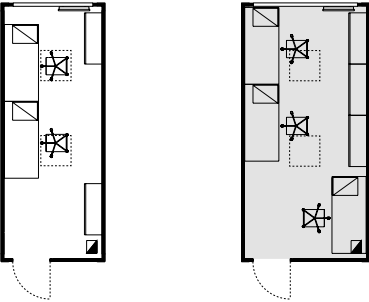


3 m



Premium container compared
to the quality all-rounder

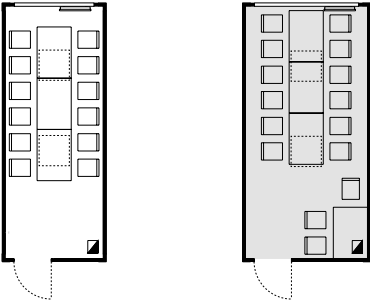
Office



Quality all-rounder
2 people

Premium container
3 people

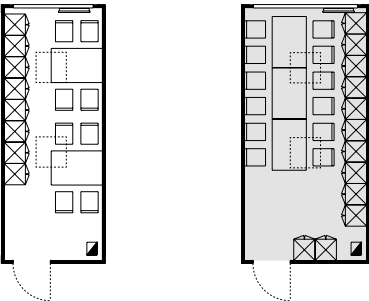
Meeting and break room



Quality all-rounder
12 people

Premium container
15 people

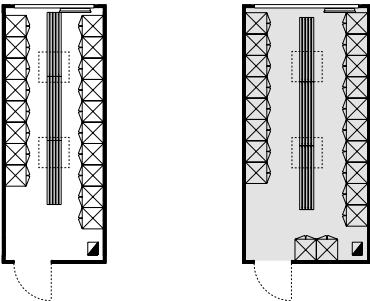
Common room and daytime accommodation



Quality all-rounder
8 people

Premium container
12 people

Changing room

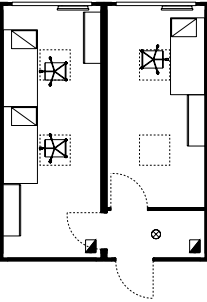


Quality all-rounder
18 people

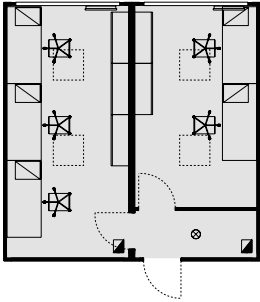
Premium container
20 people

Planning examples

Offices
01

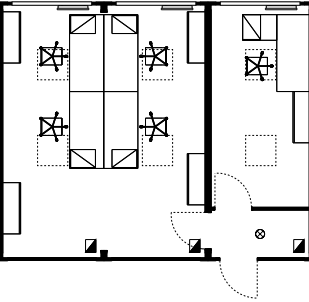


2 quality all-rounders
(each 2.5 metres wide)
2 people
1 person

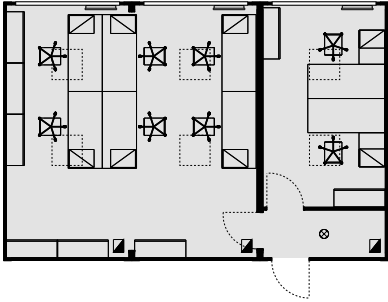


2 premium containers
(each 3 metres wide)
3 people
2 people

Offices
02

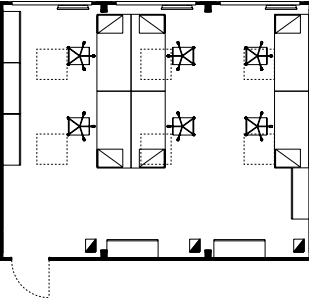


3 quality all-rounders
(each 2.5 metres wide)
4 people
1 person

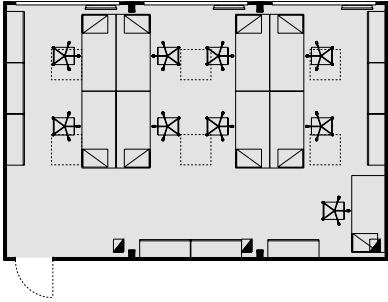


3 premium containers
(each 3 metres wide)
6 people
2 people

Offices
03



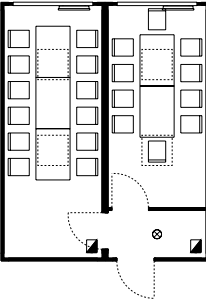
3 quality all-rounders
(each 2.5 metres wide)
6 people



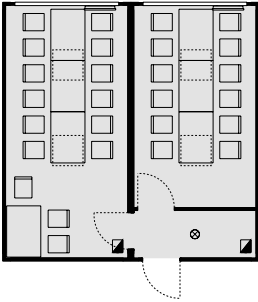
3 premium containers
(each 3 metres wide)
9 people

Planning examples

Meeting and break rooms
01

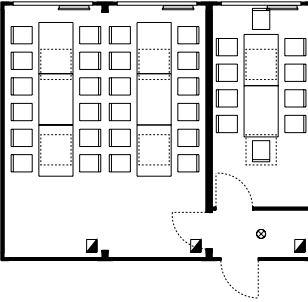


2 quality all-rounders
(each 2.5 metres wide)
12 people
10 people

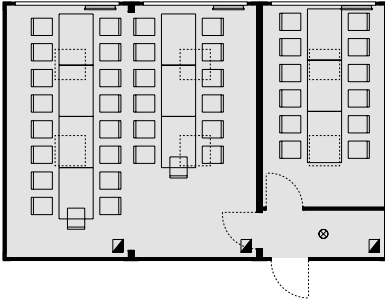


2 premium containers
(each 3 metres wide)
15 people
12 people

Meeting and break rooms
02

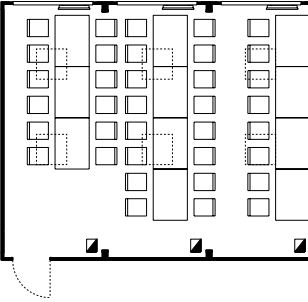


3 quality all-rounders
(each 2.5 metres wide)
24 people
10 people

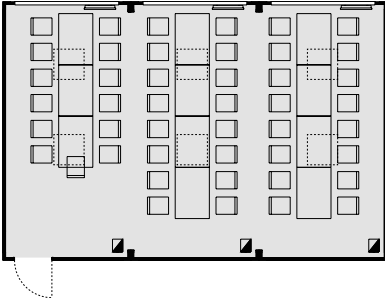


3 premium containers
(each 3 metres wide)
30 people
12 people

Meeting and break rooms
03



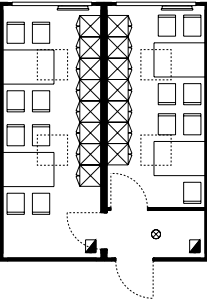
3 quality all-rounders
(each 2.5 metres wide)
36 people



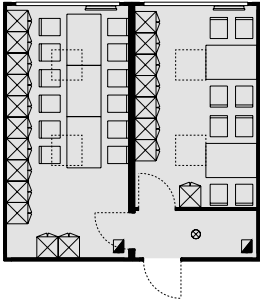
3 premium containers
(each 3 metres wide)
45 people

Planning examples

Common rooms and daytime accommodation
01

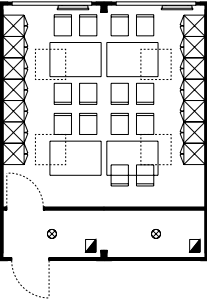


2 quality all-rounders
(each 2.5 metres wide)
8 people
7 people

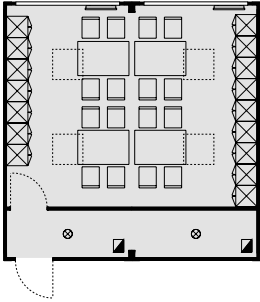


2 premium containers
(each 3 metres wide)
12 people
8 people

Common rooms and daytime accommodation
02

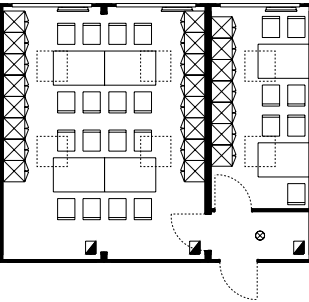


2 quality all-rounders
(each 2.5 metres wide)
14 people

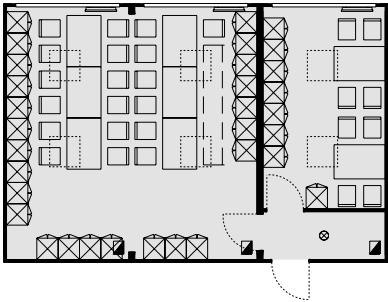


2 premium containers
(each 3 metres wide)
16 people

Common rooms and daytime accommodation
03



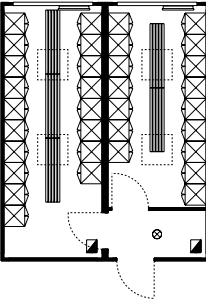
3 quality all-rounders
(each 2.5 metres wide)
16 people
7 people



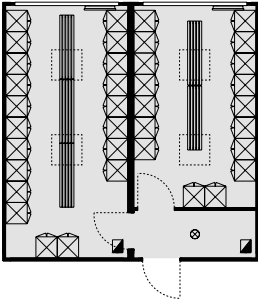
3 premium containers
(each 3 metres wide)
24 people
8 people

Planning examples

Changing rooms
01

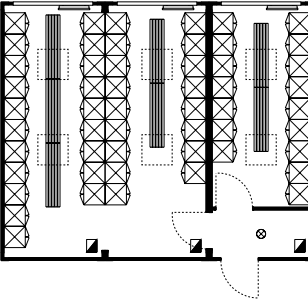


2 quality all-rounders
(each 2.5 metres wide)
18 people
16 people

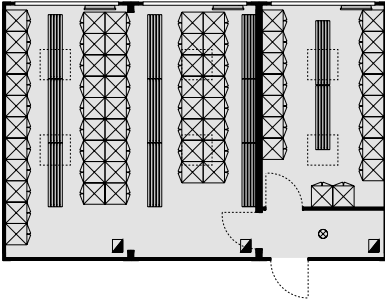


2 premium containers
(each 3 metres wide)
20 people
17 people

Changing rooms
02

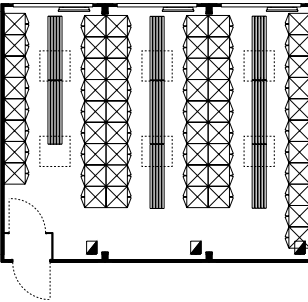


3 quality all-rounders
(each 2.5 metres wide)
37 people
16 people

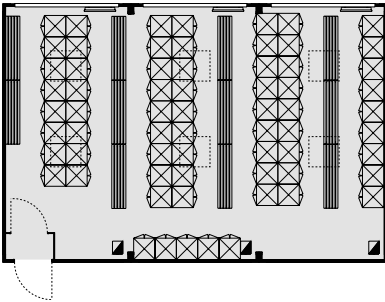


3 premium containers
(each 3 metres wide)
45 people
17 people

Changing rooms
03



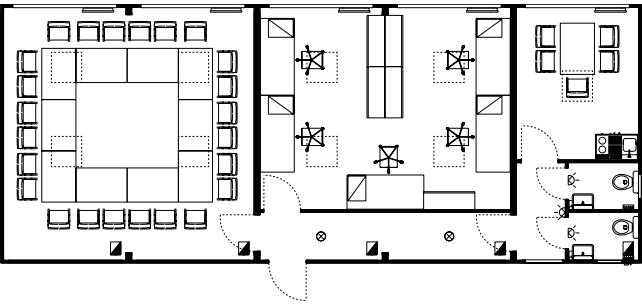
3 quality all-rounders
(each 2.5 metres wide)
55 people



3 premium containers
(each 3 metres wide)
66 people

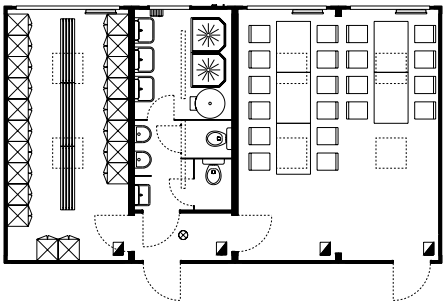
Planning examples
Container systems

Office with meeting room, 2 WCs,
kitchenette with seating



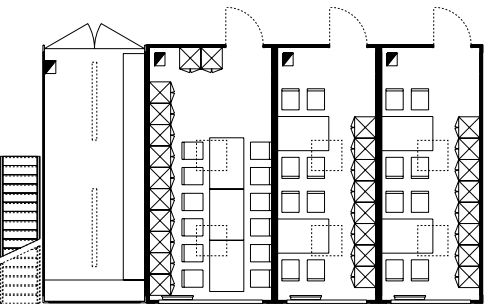
5 premium containers (3.0 m)
24 people (meeting room)
5 people (office)
5 people (kitchenette)

Daytime accommodation with changing room, bathroom
with 2 showers and 2 WCs, break room



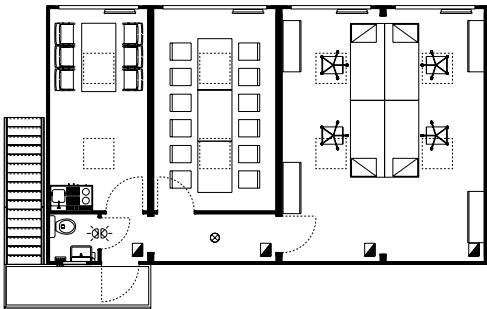
1 premium container (3.0 m)
1 sanitary container (2.5 m)
2 quality all-rounders (2.5 m)
20 people (changing room)
20 people (accommodation)

Common room and daytime accommodation,
utility room (ground floor)



1 storage container (2.5 m)
1 premium container (3.0 m)
2 quality all-rounders (2.5 m)
12 people (daytime accommodation)
8 people (daytime accommodation)
8 people (daytime accommodation)

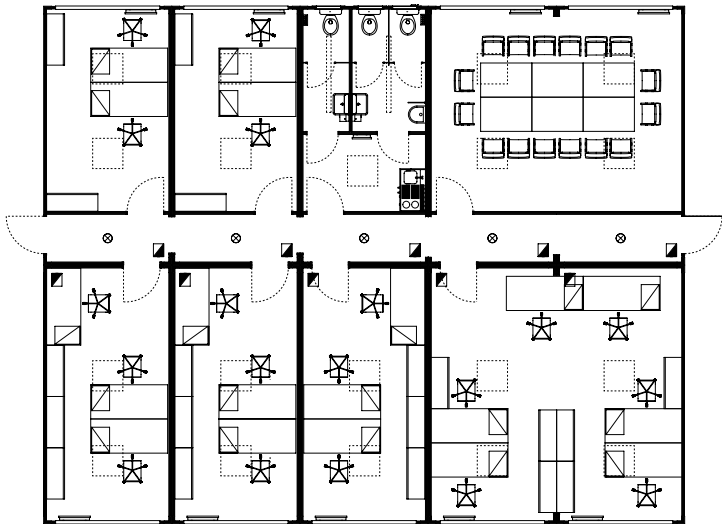
Office with meeting room, WC,
kitchenette with seating (first floor)



3 quality all-rounders (2.5 m)
1 premium container (3.0 m)
6 people (kitchenette)
12 people (meeting room)
4 people (office)

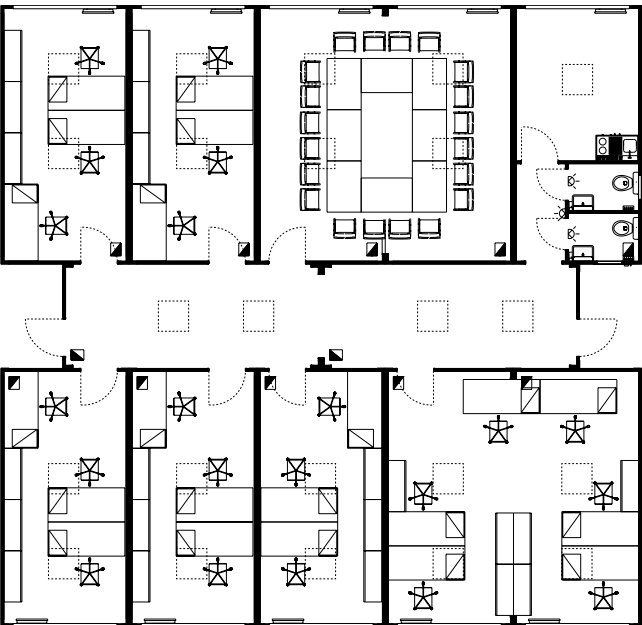
Planning examples
Container systems

Office complex with interior corridor system



10 premium containers (3.0 m)
19 people (office)
16 people (meeting)
Bathrooms for men and women
Kitchenette

Office complex with container corridor system



10 premium containers (3.0 m)
2 quality all-rounders (corridor) (2.5 m)
21 people (office)
20 people (meeting)
Bathrooms for men and women
Kitchenette

Notes

Publisher:
ELA Container GmbH
Zeppelinstrasse 19-21
49733 Haren (Ems)
Germany

Tel +49 593 250 60
Fax +49 593 250 610

www.container.de
info@container.de

Conceptualisation, design, editing,
product visualisation:
schmitz Visuelle Kommunikation,
Wuppertal, Germany

Printer:
purpur GmbH, Cologne, Germany

Subject to technical changes, product illustrations may deviate. Any colour differences between the images in this product brochure and the products themselves are the result of the printing process and are unavoidable.

© 2025
ELA Container GmbH,
Haren (Ems), Germany

ela[container]