

Mobile room solutions,  
containers, planning examples  
and services

**ela[container]**

A photograph of an industrial facility featuring a long row of stacked, light-colored mobile containers. In the background, there are large industrial structures, including a tall distillation column and various pipes. Two workers in safety gear are visible in the distance. The scene is lit with a warm, golden light, suggesting sunrise or sunset. A truck is partially visible on the left side of the frame.

**For industrial  
facilities**

**Room solutions** ↗ p. 03

Offices	p. 06
Meeting rooms	p. 07
Lounges	p. 08
Gatekeeper room	p. 09
Sanitary facilities	p. 10
Changing rooms	p. 11

**Containers** ↗ p. 12

Modular elements	p. 14
Interior corridor systems	p. 15
Container corridor systems	p. 15
2.5- and 3-metre-wide containers	p. 16
Comparison of quality all-rounders and premium containers	p. 17

**Planning examples** ↗ p. 18

Small room solution 1	p. 19
Small room solution 2	p. 19
Medium room solution 1	p. 20
Medium room solution 2	p. 20
Large room solution 1	p. 21
Large room solution 2	p. 21

**Services** ↗ p. 22

# Mobile room solutions for industrial facilities





In the industry and other production sectors, smooth processes are the key to success. Disruptions to infrastructure, unforeseeable surplus capacities or sudden spikes in orders require quick action. With flexible room solutions, ELA Container is on hand in these situations, ready to help companies expand their space at short notice.

#### **Custom room solutions**

ELA Container combines the benefits of modular container design with custom specifications for production facilities, offices, common rooms, workshops, sanitary areas and storage rooms. Room solutions are designed by professional and reliable ELA experts, taking specific customer requirements into account. ELA can even incorporate special requests in the container construction process.

#### **Always on-site**

ELA Container focuses on being close to its customers and keeping transport distances short. Fast delivery is always guaranteed thanks to a high inventory of containers and a well-established ELA distribution network that stretches throughout Europe. Installed on site and fully fitted, ELA room solutions are ready to use right away. Personal specialist consultants are available to answer questions even after the container system is set up.

#### **A tradition of quality**

ELA containers are made in Germany. They are extremely robust and durable, making them perfect for locations such as construction sites, production sites or high-security areas. Excellent craftsmanship, safe materials and efficient insulation make ELA containers especially appealing as temporary spaces in industrial sectors. As a family business with around 50 years of experience in the development and construction of mobile rooms, ELA is a specialist in its industry.

## Offices

### Comfortable working in ELA office containers

ELA office containers allow employees to continue working without disruptions when their permanent offices are being renovated, extended or newly built. Temporary offices are set up on company premises at short notice exactly according to customer needs. They come fully fitted with appropriate furniture, meeting rooms and a kitchenette if desired. Even company networks can keep running reliably – ELA provides the necessary data lines.

#### ✓ Benefits

ELA office containers are available at short notice and ready to use immediately

Mobile offices with big windows create modern, pleasant workplaces with the optimal indoor environments

Floor plans and room layouts can be flexibly adapted to individual requirements

Fully equipped, if desired, with electrical connections and modern IT hardware (IT connection via cables or access points)



**Image top**  
Work in the office containers, which are fully fitted with desks, chairs and cabinets, can get going straight away.

**Image bottom left**  
Thanks to precise planning and individual design options, the containers can be adapted to meet any need.

**Image middle right**  
Large windows, heating and air conditioning ensure a pleasant indoor environment at all times, no matter what the weather or time of year.

**Image bottom right**  
Just a few steps away: corridor modules connect the individual offices in the mobile container system to each other.



## Meeting rooms

### Container rooms for joint projects

For many companies, meetings and video conferences involving several participants are part of the daily routine. ELA Container has the perfect room solution for this: large, spacious meeting rooms including technical equipment and furniture if desired. Multiple container modules can be connected without partition walls, so that virtually any room size can be achieved. ELA meeting rooms guarantee a pleasant indoor environment.

#### ✓ Benefits

Room size can be freely defined, with or without partition walls

Technical equipment and furniture included in delivery if desired

Natural daylight, artificial lighting and heating and air conditioning can be flexibly adapted



**Image top**  
Large windows provide this meeting room in an ELA container module with lots of natural daylight and maximum transparency.

**Image bottom**  
Needle felt flooring to absorb noise and warm wood accents make this ELA meeting room especially inviting.



## Lounges

### Containers for extended time indoors

With flexible room sizes, ceiling heights of up to 2.75 metres and lots of daylight thanks to large windows, ELA containers tick all of the boxes for lounges. ELA room modules are also versatile for industrial companies as canteens, recreational areas or reception areas. ELA lounges can be free-standing or connected to an existing building depending on conditions on site.

#### ✓ Benefits

ELA containers tick all of the boxes for lounges

Containers can be adapted and equipped according to their intended purpose

Container systems can be free-standing or, if conditions on site allow, connected to an existing building



**Image top**  
Large canteens are easy to implement with lounges made from ELA containers.

**Image bottom**  
Natural daylight, high ceilings and interior design promote the well-being of users of the mobile ELA lounges.



## Gatekeeper rooms

### Container systems for gatekeepers and guards

Available to rent or buy, ELA gatekeeper systems are used at factory gates, trade fair entrances or building sites. The containers can be combined to create any amount of usable area, even multistorey room solutions with a roof terrace. ELA's comprehensive range of furniture makes it possible to furnish gatekeeper rooms with tables, chairs and cupboards. If the container system is larger, it is also advisable to incorporate kitchen elements and sanitary containers.

#### ✓ Benefits

Flexible positioning of the gatekeeper system at security-relevant points on the premises

Robust construction of the container rooms provides safety at the factory gate

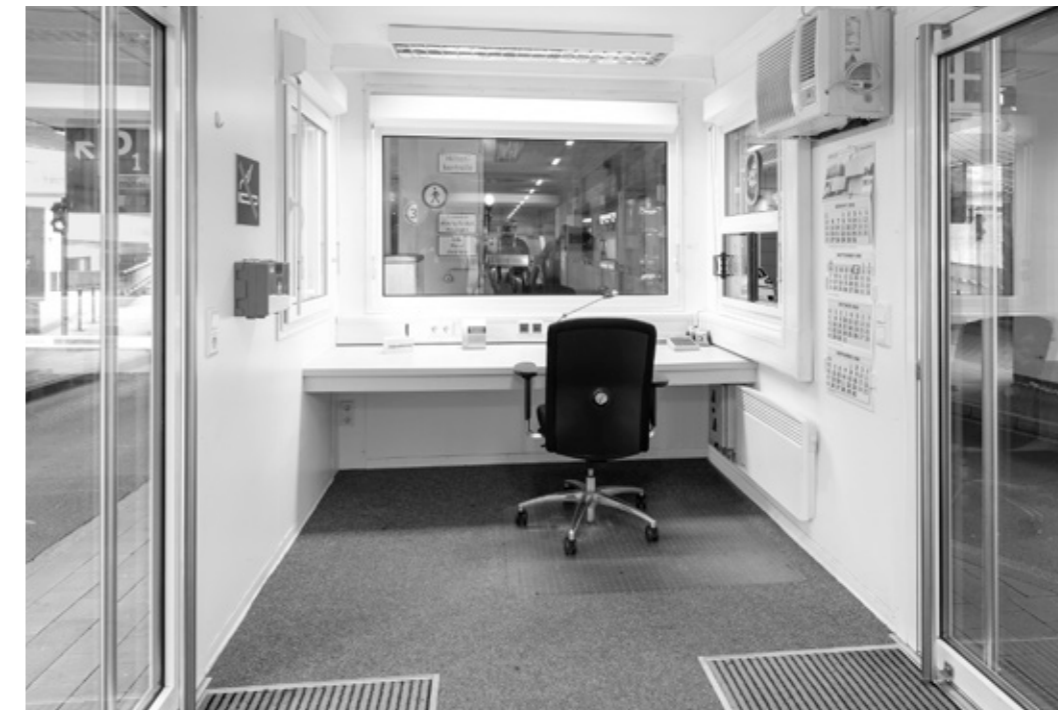
The gatekeeper room equipment can be adapted as needed

Special window elements support sign-in and registration processes



**Image top**  
Security personnel can control access to company premises with ease from the compact gatekeeper room.

**Image bottom**  
Fitted with a desk, chair and LED lighting, the gatekeeper container from ELA is ready to use immediately.



## Sanitary facilities

The ideal addition to lounges

Even temporary workplaces and lounges require suitable sanitary areas. ELA quality all-rounders and premium containers are both available as sanitary containers – fully fitted, if desired, with WCs and urinals, sinks, showers and optional waste-water storage tanks. The individual sanitary elements can be combined and divided in line with customer requirements. The toilet and shower containers from ELA are robust and very easy to keep clean thanks to their smooth surfaces.

### ✓ Benefits

Separate sanitary areas for men and women make ELA room solutions complete

Containers can be fitted with everything from WCs and sinks to shower cubicles and urinals

Optional tap-water and waste-water tanks allow for self-sufficient operation if needed

Easy-care surfaces and robust construction



**Image top**  
An extra-wide ELA toilet container provides space for several WC cubicles, urinals and sinks.

**Image bottom left**  
Comfort is a priority in ELA sanitary containers: boilers supply hot water to the shower cubicles.

**Image bottom right**  
The extensive range of fittings available for the ELA sanitary modules includes mirrors and shelves. Soap dispensers are also available if desired.



## Changing rooms

Practical room solutions with lockers

Functional changing room facilities make smooth operations easier. ELA containers are spacious and offer safety and privacy. Changing rooms and lounges can also be fully fitted with tables and chairs, secure lockers or sanitary areas as desired. ELA containers are optimally insulated, making them suitable even in tough environmental conditions, and can be designed flexibly for any floor plan size.

### ✓ Benefits

Secure storage of clothing and personal items in ELA changing room containers

Perfect container-based addition to workshops, warehouses and production halls

Fitted with benches, lockers, tables and chairs based on individual customer requirements



**Image top**  
The customer can decide how big the ELA room solution for changing rooms and recreational areas is and what furniture and equipment it will have, based on individual needs.

**Image bottom**  
Clothing and other personal items are safely stowed in secure lockers during working hours.



# A container for any application

The flexibility of the ELA system guarantees its universal applicability. The ELA containers are combined in different ways and adapted for any application on the basis of their stable steel-frame construction with sandwich panels in the ceiling, floor and walls. What makes them unique are the modular elements at the front, which allow for individual combinations of heaters, air-conditioning units and windows. The modular elements can also be interchanged within just a few minutes at the place of use.

## ✓ Benefits

ELA containers are suitable for any application and any location

Standard dimensions allow for flexible combination of the modules to create any desired room size

Container rooms can be quickly adapted thanks to modular elements at the front

Stable, robust construction guarantees functionality even over long periods of use



### Premium containers and quality all-rounders

The two variants feature different widths, are of the highest quality and can be used for any potential application in any industry.

L: 6,055 mm  
W: 2,435 mm | 3,000 mm  
H: 2,890 mm

### Sanitary containers

Both the ELA quality all-rounder and the premium container are available as fully equipped sanitary containers.

L: 6,055 mm  
W: 2,435 mm | 3,000 mm  
H: 2,890 mm

### First-aid containers

With the basic equipment, the first-aid container provides the space for quick care when needed.

L: 6,055 mm  
W: 2,435 mm | 3,000 mm  
H: 2,890 mm



### Furniture and accessories

Whatever is needed to make temporary rooms functional and practical for their desired purpose, ELA has a range of furniture, accessories and equipment available.



### 10 feet

L: 2,991 mm  
W: 2,438 mm  
H: 2,591 mm

### 20 feet

L: 6,058 mm  
W: 2,438 mm  
H: 2,591 mm

### Storage containers

Spacious storage containers protect valuable materials and are ready for use at short notice.



### 2 x 20 feet

L: 6,058 mm  
W: 4,876 mm  
H: 2,591 mm

### 3 x 20 feet

L: 6,058 mm  
W: 7,044 mm  
H: 2,591 mm

### Workshop system

With extensive electrical installations and shelving plus an optional workbench, the ELA workshop system is ready to use immediately and can be expanded with additional containers.

## Modular elements

### Flexible heating, ventilation and air conditioning



Even the basic versions of ELA containers are fully equipped and designed for immediate use. Modular elements from ELA provide a diverse range of fittings beyond the standard equipment with their combination options. With these flexible elements at the front of the containers, installing equipment such as an air-conditioning system in summer is straightforward and takes just a few minutes. Switching from electric to gas heating is just as easy. Blank elements or panoramic glass panes make for an impressive appearance.

#### ✓ Benefits

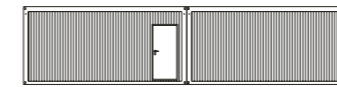
Installation in just a few minutes

Countless potential combinations

Flexible expansion options

## Interior corridor systems

### Space-saving access



W: 1,120 mm

If the amount of available space is limited, partition walls can be used to create a corridor within the container. Even with no additional corridor containers, this allows individual room units to be accessed quickly and easily.

#### ✓ Benefits

Suitable for space-saving use of container systems

Optimal use of space thanks to the narrow corridor

All rooms are insulated and can be heated

Suitable for all industries



#### Blank element

Creates a consistent appearance and prevents unwanted spying



#### Glass element

Enlarges the window area at the front and lets even more daylight into the container

Exterior view



#### Split air-conditioning unit

For energy-efficient air conditioning on hot days

Interior view



#### Gas heating

The perfect solution if a gas connection or tank is available



#### Electric heating

Heat the container easily and comfortably with electricity with no additional appliances

## Container corridor systems

### Spacious access



W: 2,305 mm | 2,870 mm

The perfect choice with sufficient space. A separate container corridor system preserves the full usable area within the containers. The wide corridors have room for additional usable areas.

#### ✓ Benefits

Designed for use in larger container systems

Suitable for all industries

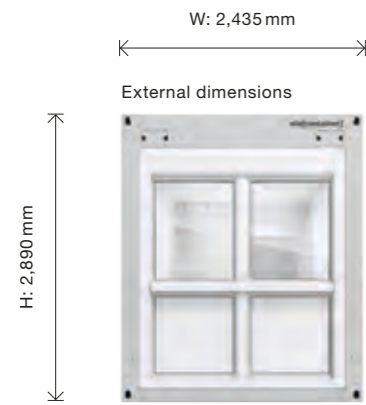
Optimal use of space with additional corridor areas

Fast integration of stairwell containers

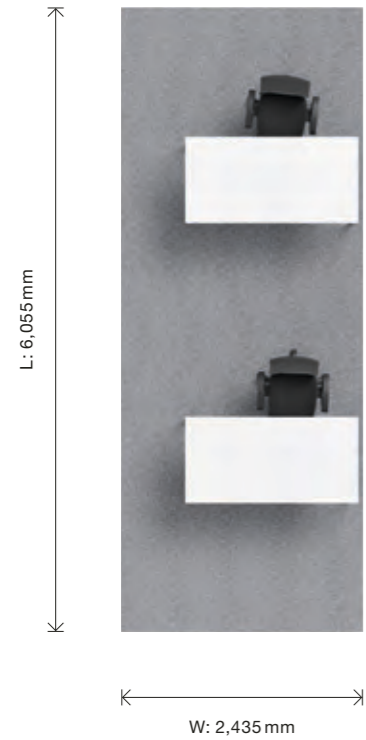
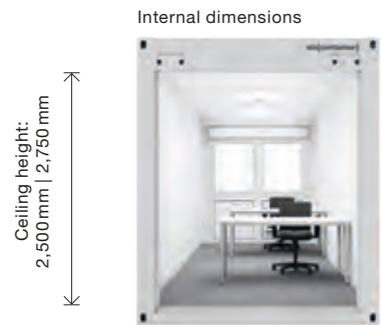
More space for more people

## 2.5- and 3-metre-wide containers

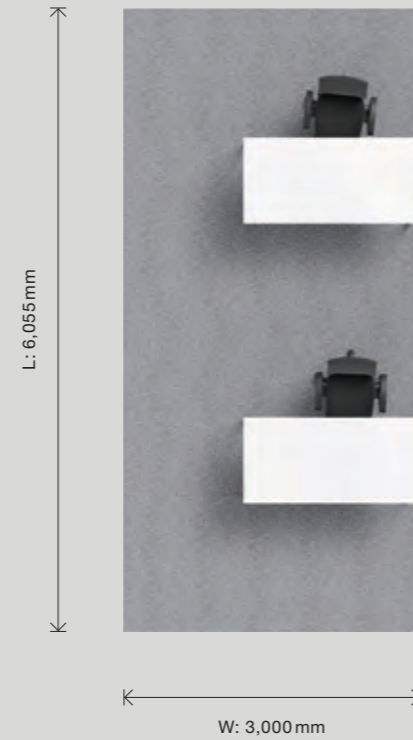
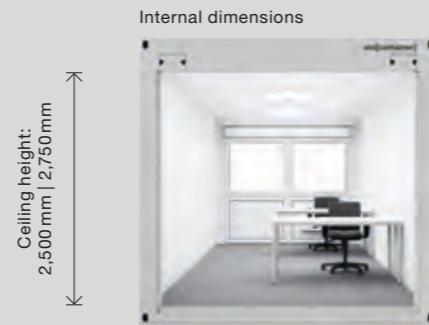
For every space requirement



2.5 m

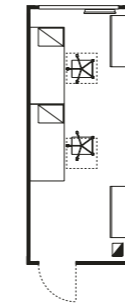


3 m

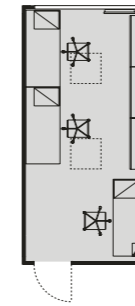


## Comparison of quality all-rounders and premium containers

### Office

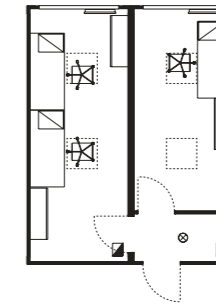


**Quality all-rounder**  
2 people

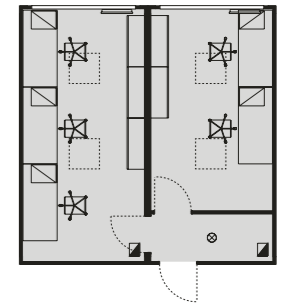


**Premium container**  
3 people

### Office

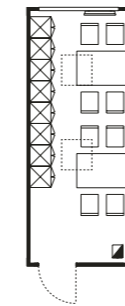


**2 quality all-rounders  
(each 2.5 metres wide)**  
2 people  
1 person

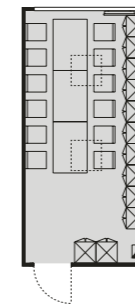


**2 premium containers  
(each 3 metres wide)**  
3 people  
2 people

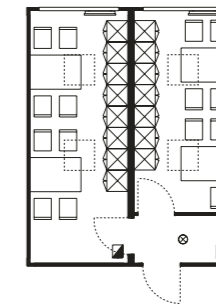
### Common room and daytime accommodation



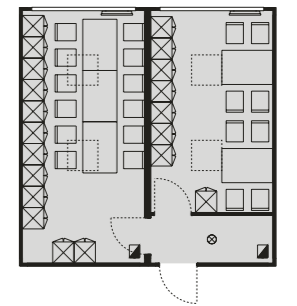
**Quality all-rounder**  
8 people



**Premium container**  
12 people

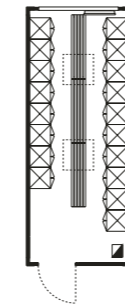


**2 quality all-rounders  
(each 2.5 metres wide)**  
8 people  
7 people

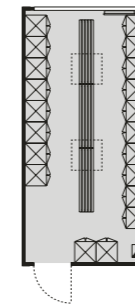


**2 premium containers  
(each 3 metres wide)**  
12 people  
8 people

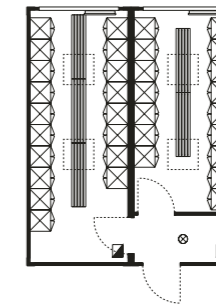
### Changing room



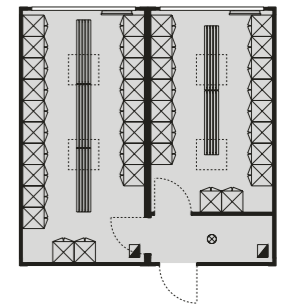
**Quality all-rounder**  
18 people



**Premium container**  
20 people



**2 quality all-rounders  
(each 2.5 metres wide)**  
18 people  
16 people



**2 premium containers  
(each 3 metres wide)**  
20 people  
17 people

# Planning examples for small, medium and large room solutions

System building based on containers follows a modular principle: individual container rooms are combined next to or on top of each other to create the usable area desired. Corridor modules, stairwells and landings connect the rooms, resulting in a fully fledged container building. The combination possibilities for the room modules are as versatile as the requests and requirements of ELA customers themselves. Every new room solution aims to meet these individual customer specifications.

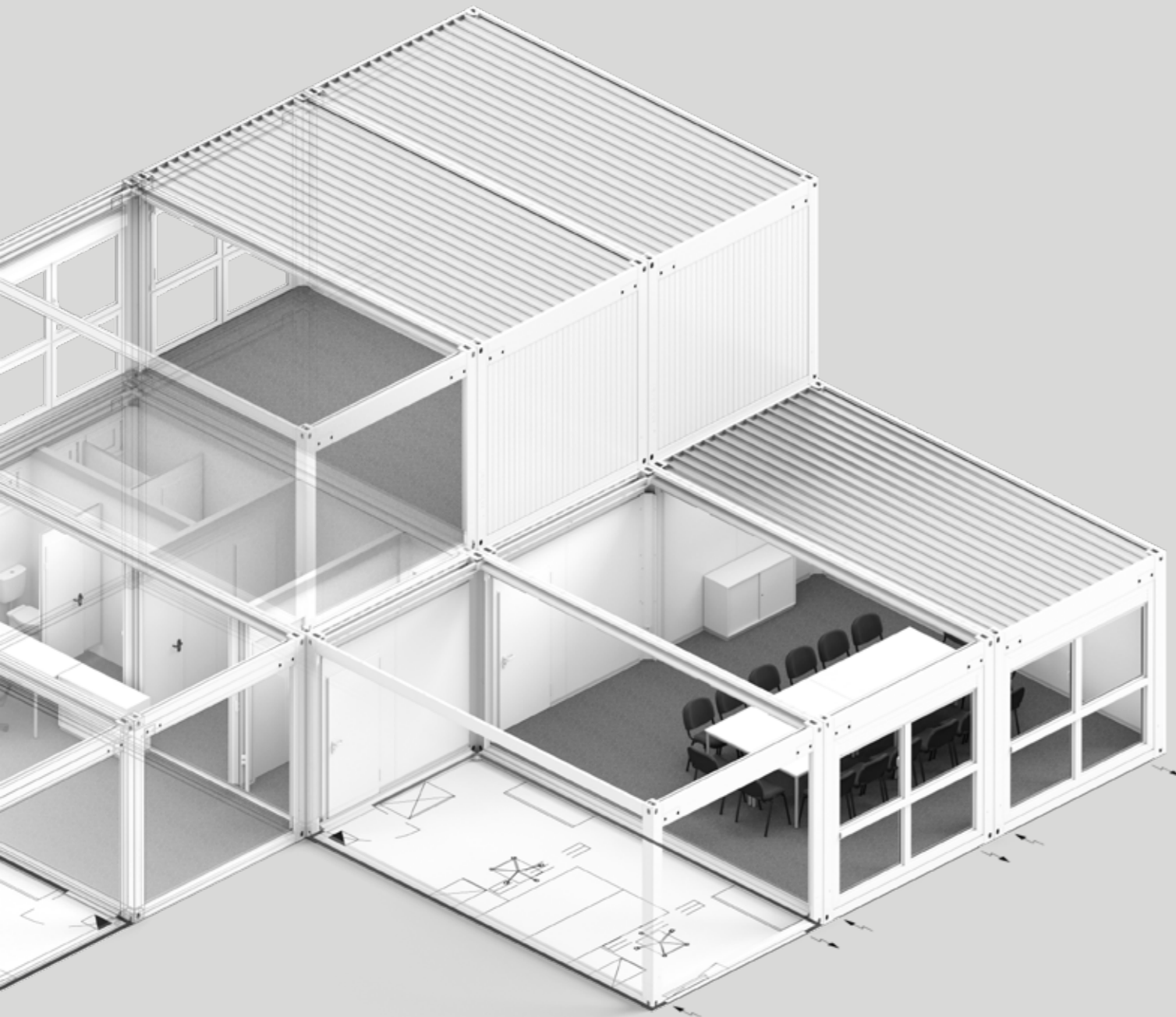
## ✓ Benefits

Modular principle allows for quick planning and installation of container systems

ELA container rooms can be combined vertically as well as horizontally

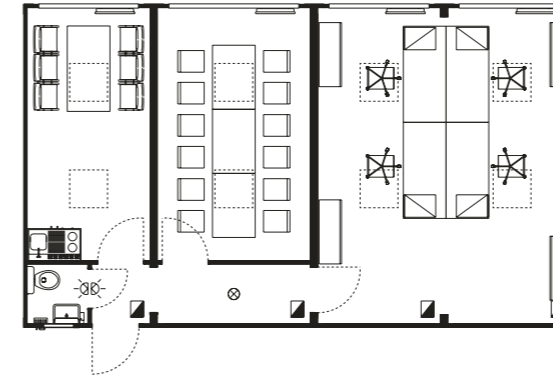
The stackability of the ELA containers facilitates maximum space efficiency

The right room solution is developed based on the customer's individual requirements



## Small room solution 1

Office with meeting room, WC, kitchenette with seating



### Details

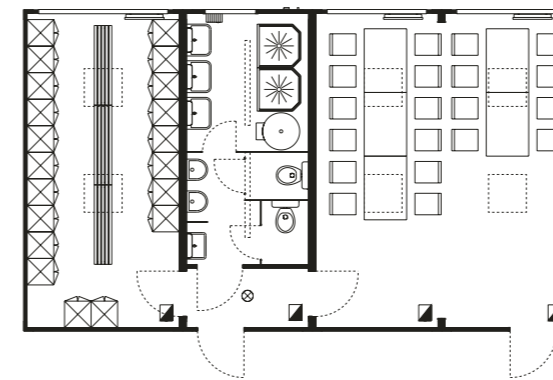
**Type and number of containers**  
3 quality all-rounders (2.5 m)  
1 premium container (3 m)

**Number of people**  
6 people (kitchenette)  
12 people (meeting room)  
4 people (office)

**Usable area**  
Approx. 65 m<sup>2</sup>

## Small room solution 2

Daytime accommodation with changing room, sanitary area with two showers and two WCs, break room



### Details

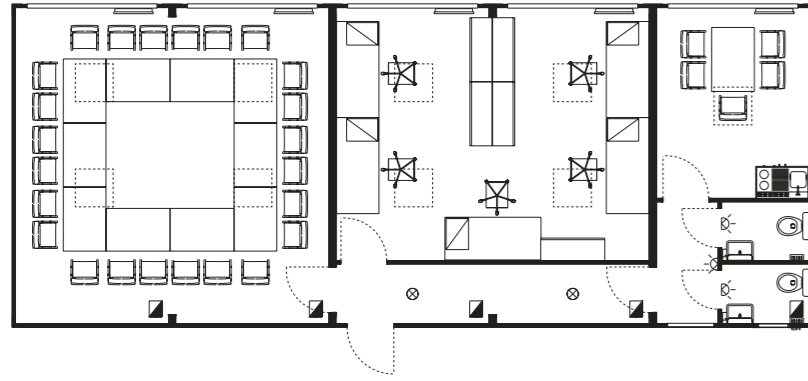
**Type and number of containers**  
1 premium container (3 m)  
1 sanitary container (2.5 m)  
2 quality all-rounders (2.5 m)

**Number of people**  
20 people (changing room)  
20 people (lounge)

**Usable area**  
Approx. 65 m<sup>2</sup>

### Medium room solution 1

Office with meeting room, two WCs, kitchenette with seating



#### Details

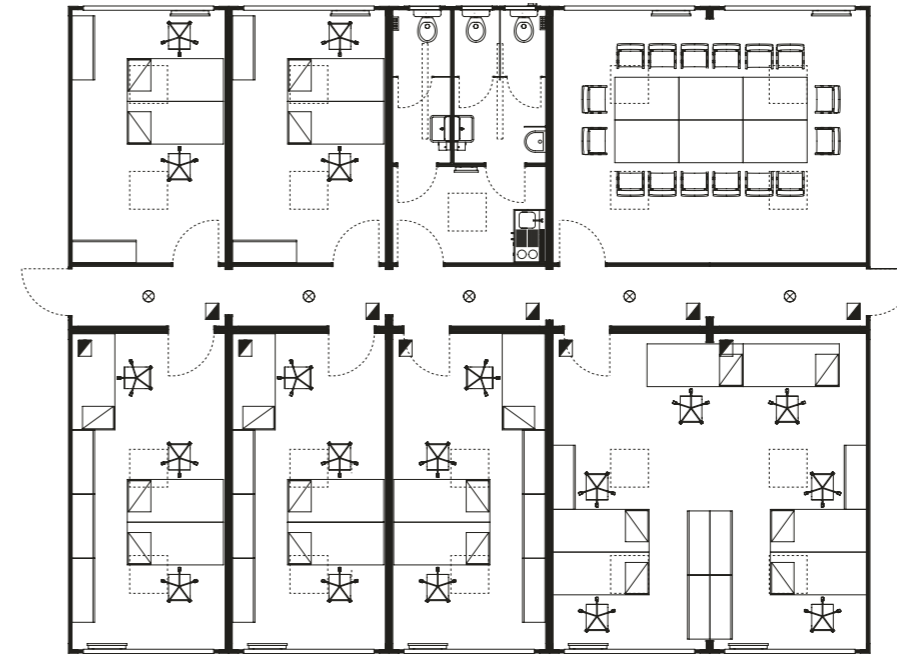
**Type and number of containers**  
5 premium containers (3 m)

**Number of people**  
24 people (meeting room)  
5 people (office)  
5 people (kitchenette)

**Usable area**  
Approx. 91 m<sup>2</sup>

### Large room solution 1

Office complex with interior corridor system



#### Details

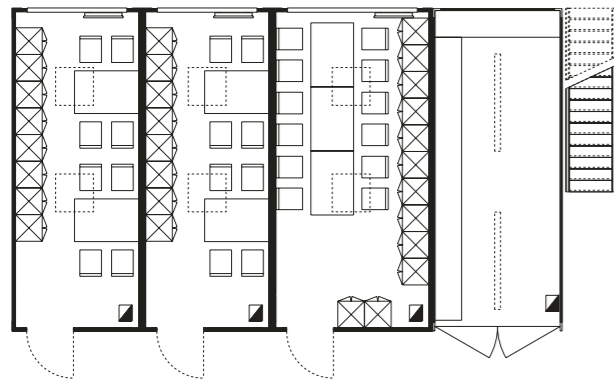
**Type and number of containers**  
10 premium containers (3 m)

**Number of people**  
19 people (office)  
16 people (meeting room)  
Sanitary area for men and women  
Kitchenette

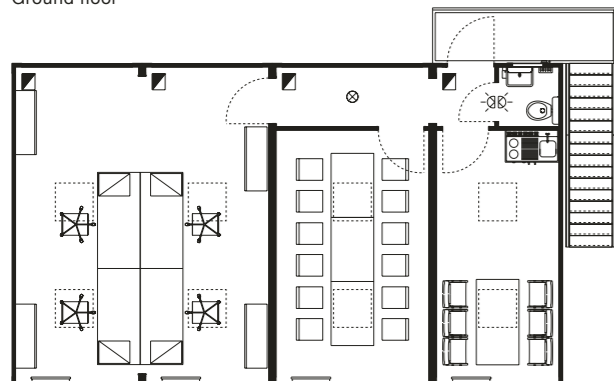
**Usable area**  
Approx. 182 m<sup>2</sup>

### Medium room solution 2

Lounge and daytime accommodation, storage room, office with meeting room, WC, kitchenette with seating



Ground floor



1st floor

#### Details

**Type and number of containers**  
Ground floor:  
1 storage container (2.5 m)  
1 premium container (3 m)  
2 quality all-rounders (2.5 m)

1st floor:  
3 quality all-rounders (2.5 m)  
1 premium container (3 m)

**Number of people**  
Ground floor:  
12 people (daytime accommodation)  
8 people (daytime accommodation)  
8 people (daytime accommodation)

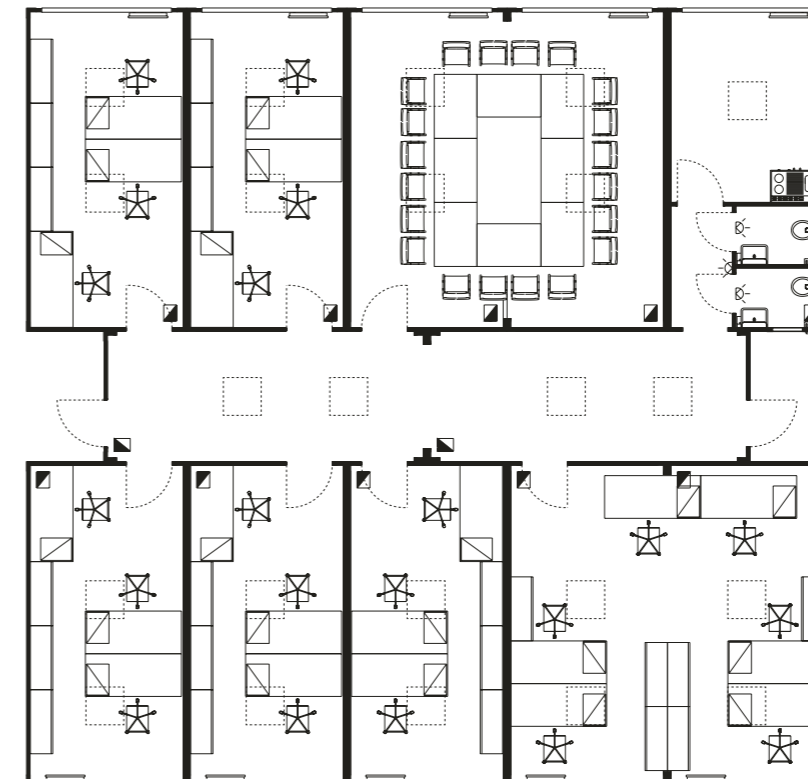
1st floor:  
6 people (kitchenette)  
12 people (meeting room)  
4 people (office)

**Usable area**  
Ground floor:  
Approx. 62 m<sup>2</sup>

1st floor:  
Approx. 62 m<sup>2</sup>

### Large room solution 2

Office complex with container corridor system



#### Details

**Type and number of containers**  
10 premium containers (3 m)  
2 quality all-rounders (corridor 2.5 m)

**Number of people**  
21 people (office)  
20 people (meeting)  
Sanitary area for men and women  
Kitchenette

**Usable area**  
Approx. 211 m<sup>2</sup>

# Good arguments for ELA Container



## Consulting and planning

The expert consultants at ELA support customers from the outset, be it by phone or in person. Working with the people in charge at the customer, they plan everything down to the smallest detail in advance, including the customer's individual floor plans. Customers are provided with free, detailed quotations on this basis. This expert consulting involves more than just optimised CAD planning; the potential savings that could be realised using ELA premium containers are also calculated.



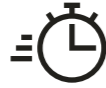
## Furniture and accessories

Reminiscent of a construction kit, ELA compiles the necessary accessories for any application: suitable furniture, complete entrance areas, bathroom areas, stairs, kitchenettes, ELA whiteboards, acoustic panels and much more. ELA provides everything from a single source – even including a communication package with telephone and Internet if required.



## Perfect insulation

Be it heat in the summer, cold in the winter, storms or rain, ELA containers provide optimal protection against the weather, maintain a comfortable room temperature and have low energy consumption. Consisting of large sandwich panels, the walls, floors and ceilings are insulated against moisture and cold with layers of insulation – all materials are of course formaldehyde-free. The construction of the containers prevents the occurrence of thermal bridges.



## Speed

ELA has around 50,000 containers and a wide range of accessories in stock at any given moment. With its own fleet of lorries, ELA can deliver throughout Europe in between 24 and 48 hours. Up to 30 containers can be erected on site per day. Our ELA specialist consultants are always nearby, across Germany and around the world, and can respond quickly to all manner of enquiries.



## Transport and assembly

ELA handles construction and final assembly with its own staff. The containers are largely pre-assembled in the factory in order to save time and effort. ELA has its own loading cranes for installation on site. However, there are no compromises when it comes to safety: professional building site safety verification, the use of trained experts, the preparation of health and safety plans and a free risk assessment for every building site are all included in the full service ELA provides.



## Non-hazardous materials

ELA containers are built so that people feel comfortable in them. That is why ELA only uses materials that do not represent a health risk or impairment to people.



## Full service

Our customers receive free quotations in next to no time. ELA containers are ready for immediate dispatch and are ready to use at short notice. We can even furnish the mobile rooms on request. If you have any technical queries, the experts on the ELA service hotline can provide an immediate answer.



## Immediately ready to use

ELA is a proven partner all over the world when it comes to planning mobile rooms for a wide range of industries. ELA containers are ready for use in the blink of an eye and compatible with any application, be it use as a nursery, office complex, accommodation or a truly individual project.



## Container protection

The complete ELA package includes Germany-wide ELA container protection. A small fee per leased container covers the risks of fire, including fire caused by lightning and explosions, mains water flooding, storm and precipitation, damage caused by natural hazards (flooding, earthquakes and landslides), container theft and vandalism following a break-in or attempted break-in. Damage to ELA leased containers and ELA leased accessories is immediately dealt with by ELA.

## Further information at:



[www.ela-container.com/sectors/industry](http://www.ela-container.com/sectors/industry)

## Our locations at a glance:



[www.ela-container.com/contact/locations](http://www.ela-container.com/contact/locations)

## Our specialist consultant in your area:



[www.ela-container.com/contact/consultant](http://www.ela-container.com/contact/consultant)

Publisher:  
ELA Container GmbH  
Zeppelinstraße 19–21  
49733 Haren (Ems), Germany  
Tel +49 5932 506-0  
Fax +49 5932 506-10  
[www.container.de](http://www.container.de)  
[info@container.de](mailto:info@container.de)

Conceptualisation, design, editing,  
product visualisation:  
schmitz Visuelle Kommunikation,  
Wuppertal, Germany

Subject to technical changes,  
product illustrations may deviate.  
Any colour differences between  
the images in this product brochure  
and the products themselves are  
the result of the printing process  
and are unavoidable.

© 2026  
ELA Container GmbH,  
Haren (Ems), Germany

**ela[container]**