

ELA NEWS

The customer magazine
www.ela-container.com

ela[container]

NO. 52

WWW.
ELA-CONTAINER.
COM





Fig. above

The new training facility made from ELA office containers provides space even for large groups.

Fig. middle

The roof terrace with lounge furniture is an inviting place for restful breaks and talks.

Fig. below

Interior stairwell with lots of light and wooden look connects both floors.



Training center elacademy

At its headquarters in Haren (Ems), ELA Container has now built an employee training center. It goes without saying that this new facility is based on an ELA office container unit! There are seminar rooms, individual workspaces, break areas, and an audio and video studio covering around 200 m² in total across two floors.

"We are committed to providing our employees with opportunities for continuing professional development," said Berthold Röttger, Director of Human Resources. According to Röttger, that's why ELA Container decided to build a new training center, called elacademy, as a modern environment for effective learning, sharing knowledge and growing professionally as a team.


Group training and interactive workshops can be held in the two large seminar rooms. Two individual workspaces are also provided for employees who need to work independently and concentrate on their learning. The high-end equipment in the audio and video studio can be used to produce professional-looking video content and webinars.

But the elacademy also offers spaces for employees to take active breaks. A wooden roof terrace is a great place to meet outdoors. There is a lounge area with a kitchen counter on the ground floor, where employees can enjoy a drink and a snack.


The elacademy comprises a total of eleven ELA office containers. The industrial design of the building features an anthracite gray exterior. The wooden look of the floor creates a high-end appearance throughout. Split heating and air conditioning units, sunscreen roller blinds, and a sun shield combine to keep the temperature just right all year round.

Details

Location	Haren (Ems), Germany
Responsible ELA location	ELA Container GmbH, Haren (Ems)
Room solutions	11 ELA office containers across 2 floors, roof terrace, audio and video studio
Usable space	200 m ² + 18 m ² on the terrace
Use	Training center
Color	Exterior walls: Anthracite gray, RAL 7016 Inner walls and ceiling: White
Floor	Wood-effect vinyl
Extra equipment	Split heating and air conditioning units, floor-to-ceiling windows, sunscreen roller blinds, glazed double door, terrace, smoke detectors, sunscreen roof
Duration of use	Several years



Experience the unit virtually
Simply scan the QR code.



01



02



03

Fig. 01

Drinks and snacks are available at the kitchen counter in the attractively designed lounge area.

Fig. 02

The training rooms are equipped with modern conference technology.

Fig. 03

The modern equipment at the elacademy also includes an audio and video studio.

Fig. 04

The elacademy focuses on providing individual opportunities for development.



04



ELA UNIT FOR ENERGY PROJECT

Offices and meeting spaces
on construction site of
one of the world’s largest
battery storage systems

Fig. above

The unit comprising 45 ELA construction containers has been leased to customer Knoll for 15 months.

Fig. 01

The offices were supplied ready for use by ELA with all necessary furnishings.

Fig. 02

The meeting rooms are equipped with state-of-the-art presentation and conference technology.



01



02



The unit includes multiple changing rooms with lockable lockers.



With over 50 employees, a first-aid room is also required.

ELA unit for energy project

As part of the energy transition, more and more electricity is being produced using renewable energy sources. This may result in the power grid experiencing temporary overloads. To counter this risk, multiple large battery storage systems known as grid boosters are being built in Germany. In Kupferzell, a town near Heilbronn in Baden-Württemberg, Fluence is currently building one of these battery storage systems for TransnetBW. It is set to be one of the largest of its kind in the world. Knoll, a construction company in the Emsland region, has been hired to complete the groundwork and construction. ELA Container was commissioned by Knoll to deliver a rental container unit for the construction site.

The temporary room solution consisting of 45 ELA construction containers provides 700 m² of usable space. That space is taken up by fully equipped offices, meeting rooms, team and recreation rooms, kitchens, changing rooms, and restrooms. One container even doubles as a porters' lodge. With over 50 people working on site, a first-aid room is required by law too.


"A construction container unit of this magnitude is special in its own right," said Ralf Neelen, a sales employee at ELA. He also believes that the experience ELA has gained from working with clients in the construction industry over multiple decades has been invaluable for this project.

ELA Container also fitted out the rooms so they were ready to use. They supplied the furniture – desks, chairs, and filing cabinets – and made the walls magnetic so the staff could hang up large plans and drawings.


"A rental unit from ELA Container also provides us with the best working conditions for this job," said Philipp Uhlen, Site Manager at Knoll.

Details

Location	Kupferzell, Germany
Responsible ELA location	ELA Container GmbH, Billigheim
Room solutions	45 ELA office, meeting, lounge, team, first-aid, kitchen, and sanitary containers on 2 floors
Usable space	700 m ²
Use	Construction container unit
Color	Exterior walls: Pebble gray, RAL 7032 Inner walls and ceiling: White
Floor	PVC R 10, light gray
Extra equipment	Split heating and air conditioning units, 2 roof terraces, external galvanized steel steps with platforms and handrails
Purchased or leased	Leased
Duration of use	15 months

 [Experience the unit virtually](#)
Simply scan the QR code.



 [Watch project video](#)
Simply scan the QR code.





Large windows and a roof terrace are among the core elements of the two-floor office unit.



Office for FC Bayern Munich Basketball

Even in basketball, Munich plays in the top league. The FC Bayern München Basketball GmbH team has won the German Championship and the BBL Cup, as well as enjoying success in the EuroLeague. This success in athletics is reflected in the growing number of staff and the need for additional office space.

Sebastian Prüsener, New Business Manager at FC Bayern München Basketball GmbH said: "Thanks to the competent advice from ELA, we got an office complex exactly the way we imagined it. The floor plan includes an open-plan office, a two-person office, a meeting room, and a roof terrace. All the colors match our FC Bayern red. We'd like to say thanks for the professional way this project was managed."

The two-floor ELA office unit combines five ELA premium containers lengthwise. "This has a positive effect on the space, but also on leasing and transport costs," said Julian Schreiner, Sales Manager, South Region at ELA Container.

Large windows and glass door fronts boast plenty of natural light and an open sense of space. On the inside, light walls and wood-effect flooring lend the office unit a high-quality ambiance, while the exterior design reflects FC Bayern's corporate design.

One of the highlights of the ELA room solution, which will be located on the VIP parking lot at BMW Park in Munich for at least 30 months, is the roof terrace on the second floor, which is accessible via an exterior stairwell. Comfort and safety features include smoke detectors, energy-saving LED lights, and split heating and air conditioning units.

Details

Location	Munich, Germany
Responsible ELA location	ELA Container GmbH, Moosburg
Room solutions	5 ELA office containers + roof terrace
Usable space	90 m² + 18 m² (roof terrace)
Use	Office and meeting space
Color	Exterior walls: Red (Bayern Munich's house color) Inner walls and ceiling: White
Floor	Wood-effect vinyl
Extra equipment	Mobile ELA concrete foundations, glazed double door, smoke detectors
Purchased or leased	Leased
Duration of use	30 months

Fig. above

Bright walls and wood-effect vinyl flooring create a pleasant working environment.

Fig. middle

FC Bayern Munich Basketball values consistent branding.

Fig. below

The two-floor office unit comprises five extra-wide ELA office containers.





Fig. above

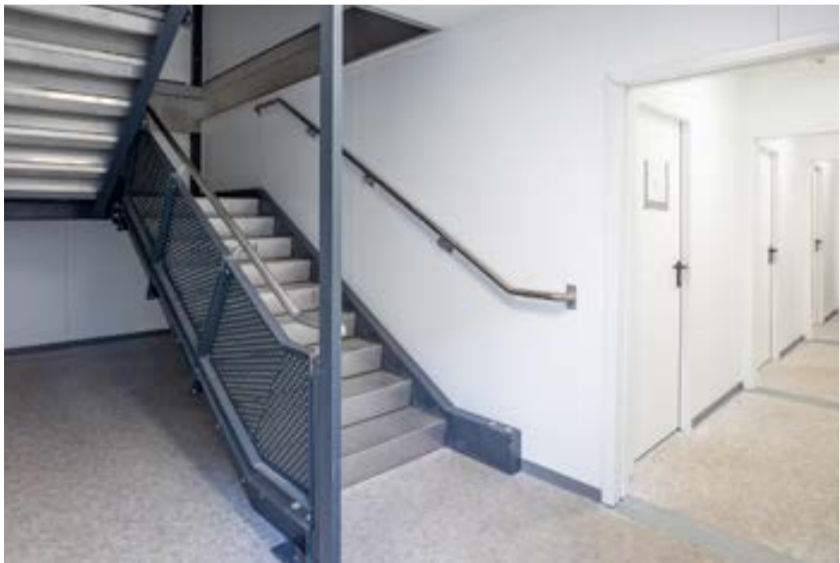
Two four-floor ELA construction container units provide a usable space of 1,200 m².

Fig. middle

Interior stairwells connect the floors of the temporary ELA buildings.

Fig. below

ELA also supplied the furniture for the break and changing rooms.



ELA room solution for Cologne's performing arts

The building complex consisting of the opera house and theater on Offenbachplatz in the center of Cologne is currently undergoing major renovation work and being extended. As part of the project, the stage equipment is being updated, a new children's opera house and small theater are being added, the acoustics in the halls are being optimized, the building technology is being upgraded, the energy efficiency of the existing buildings is being improved, and accessibility is being addressed.

The contractor managing the project on behalf of the city of Cologne, Munich-based Building Construction Logistics (BCL), has rented two ELA construction container units, each with 40 room modules, for approximately 18 months. With 80 modules in total spanning 1,200 m², there is plenty of space for offices, sanitary facilities, and first-aid areas. ELA Container also supplied the furniture required (tables, chairs, and lockers) directly.

"There's hardly ever enough room on construction sites," said ELA Sales Representative Dennis Schmidt. And the situation is usually worse in city center locations like Offenbachplatz in Cologne. "It was good news for this project that four ELA containers can be stacked on top of each other. We seized this opportunity for both buildings so we could make the best use of the space available for our customer."

"Our customer was very pleased and expressed their delight in an unusually creative way," said Schmidt. The customer came up with some potential new slogans for the room solutions from ELA – "Cologne's old town style meets industrial design," "Cologne just got edgier," "Perfect practicality – squared," and "Containerizing is state of the art."

Details

Location	Cologne, Germany
Responsible ELA location	ELA Container GmbH, Haren (Ems)
Room solutions	80 ELA office, lounge, changing room, kitchen, sanitary facilities, and stairwell containers on 4 floors
Usable space	1.200 m ²
Use	Construction container unit
Color	Exterior walls: Pebble gray, RAL 7032 Inner walls and ceiling: White
Floor	PVC R 10, light gray
Extra equipment	Mobile ELA concrete bases, smoke detectors
Purchased or leased	Leased
Duration of use	18 months



Fig. above

The unit was built on four flood-proof shipping containers.

Fig. middle

The offices can be reached via an exterior stairwell container.

Fig. below

Large windows and bright furnishings make for a pleasant working environment.



Construction offices for Depenbrock Ingenieurwasserbau

Special local conditions require extraordinary solutions for construction container units – such as those used by the company Depenbrock Ingenieurwasserbau for the renovation of the Neumühlen quay wall in Hamburg-Ottensen. The construction site on Northern Elbe river is prone to flooding during the storm flood season. That is why ELA, together with the customer, decided to install the ELA construction container units at an appropriately elevated height.

The customer built a substructure consisting of four 20-foot shipping containers and steel girders, which forms an elevated base for the ELA construction container unit. "The expected flooding placed special demands on the construction of the container units," said Christian Buhmann, Project Manager for General and Hydraulic Engineering at Depenbrock. Together with the ELA sales force, an optimal solution was found in a short time. "We are very satisfied with the overall package that was delivered to us by ELA Container," said Buhmann.

The ELA construction container unit comprises twelve ELA room containers. On a total area of 255 m², they offer space for offices, meeting rooms, recreation areas, a kitchen, and sanitary areas. An interior hall and five stairwell containers connect the areas and floors. Outside, three ELA platforms form a roof terrace on approx. 45 m². Suitable furniture was also supplied.

"In cooperation with our customer, we were once again able to develop the ideal room solution for the special requirements of this construction site," said Thomas Nohrn, Sales Manager, North Region at ELA Container.

Details

Location	Hamburg, Germany
Responsible ELA location	ELA Container GmbH, Trappenkamp
Room solutions	12 ELA office, meeting, lounge, break, kitchen, sanitary area, and stairwell containers
Usable space	255 m ²
Use	Construction container unit
Color	Exterior walls: Pebble gray, RAL 7032 Inner walls and ceiling: White
Floor	PVC 10, light gray
Extra equipment	3 terrace platforms with encircling railing, smoke detectors
Purchased or leased	Leased
Duration of use	24 months



TEMPORARY OFFICE BUILDING FOR WIELAND ELECTRIC

ELA office containers for Bamberg-based business

Temporary office building for Wieland Electric

Wieland Electric is a global technology business based in Bamberg in Upper Franconia. The company needed additional meeting rooms and project spaces but did not want any disruption to its employees' work when they moved into their temporary ELA unit.

"It was important to our customer that the team would be able to get straight to work in the new space without any transition period," said Norbert Spiegel, a sales employee at ELA. "We have plenty of experience when it comes to setting up mobile office spaces – from drawing up the floor plans to connecting the data technology." That explains why ELA managed yet another seamless move.

ELA supplied 60 of its ELA office containers with a width of three meters for the temporary office and meeting spaces. This amounted to 1,080 m² of usable space in total across three floors. Wieland Electric, the world market leader for pluggable electrical installations in the field of building technology and a provider of safety and automation technology, is renting the ELA unit consisting of office and meeting spaces, kitchens, and sanitary facilities for 24 months.

Fire safety features, including heat and smoke detectors, are in place to keep staff safe. Split heating and air conditioning units keep the temperature just right all year round. Employees can stay in touch with each other and the rest of the world thanks to integrated cable runs and special ELA ActivePort network technology. The three floors are connected on the outside by galvanized steel steps with platforms and handrails. A mobile ELA concrete base was used to ensure stability and leveling.

"As per the standard procedure, the entire unit was delivered on ELA trucks with the use of a loading crane. Experienced ELA teams took care of the installation.

"Working with ELA Container has been simple and reliable," said Mike Kellner, Head of Building Management at Wieland Electric GmbH.

Details

Location
Bamberg, Germany
Responsible ELA location
ELA Container GmbH, Moosburg
Room solutions
60 ELA office, meeting, kitchen and sanitary containers on 3 floors
Usable space
1,080 m ²
Use
Temporary office building
Color
Exterior walls: Anthracite gray, RAL 7016 Inner walls and ceiling: White
Floor
PVC R 10, light gray
Extra equipment
Special features: Fire-safety features, including heat and smoke detectors, split heating and air conditioning units, cable runs, ELA ActivePort network technology
Purchased or leased
Leased
Duration of use
24 months

Fig. above

The customer requested anthracite gray as the color for its temporary office building.

Fig. 02

ELA supplied everything the company would need to launch straight into meetings.

Fig. 03

Interior halls connect the individual rooms of the office unit in Bamberg.

Fig. 04

Employee offices are spacious and fully furnished.



02



03



04



LOTS OF
SPACE TO
PLAY AND
LEARN

Fig. above

Two large group rooms give the children space to play and learn.

Fig. middle

The customer installed wooden panels to the nursery containers.

Fig. below

There is child-friendly equipment both outside and inside the nursery.



Nursery unit in Zuidhorn

The Dutch “De Boshut” (“Tree House”) childcare facility in Zuidhorn near Groningen provides children with all the space they need to grow. There may be a clear focus on spending time outside in the fresh air, but there is still a need for indoor space for playing and learning. With group rooms, sanitary areas, and kitchen space required, the nursery decided to invest in a permanent room solution from ELA Container.


“We have plenty of experience of designing and delivering age-appropriate spaces for nurseries and schools,” said ELA Regional Sales Manager Ruben Dijkema. Working in close partnership with the customer, ELA managed to create a fantastic nursery unit in Zuidhorn. “Our nursery containers provide the children with all the space they need to grow in keeping with the De Boshut way of teaching and learning,” said Dijkema.

The ELA unit consists of nine ELA nursery containers, providing around 160 m² of usable space in total. This space comfortably accommodates two group rooms, a kitchen, sanitary rooms and sinks at the right height for the children, and an office. Large windows let in lots of natural light, while the bright fittings and furnishings create a welcoming environment. Acoustic sails on the ceilings, additional insulation, and split heating and air conditioning units all work together to make the space as comfortable as possible. Safety features include a fire extinguisher, fire-resistant walls, and emergency exit lighting. The customer decided to customize the outside of the unit themselves, adding some wooden panels and a fascia.


“We were looking for a room solution we could rely on for running our nursery and school for the next ten years,” said Tom Mooibroek, manager of the nursery. The customer was happy that ELA had delivered the exact space the nursery needs.

Details

Location	Zuidhorn, Netherlands
Responsible ELA location	ELA Container Nederland BV, Groningen
Room solutions	9 ELA nursery, office, and sanitary area containers
Usable space	160 m ²
Use	Childcare
Color	Exterior walls: Pebble gray, RAL 7032 Inner walls and ceiling: White
Floor	Wood-effect vinyl, PVC R 10, light gray, carpet/needle felt, anthracite
Extra equipment	Acoustic ceiling sails, split heating and air conditioning units, kitchen, fire extinguisher, fire-resistant walls, additional wall insulation, finger protection, furnishings Supplied by customer: Wooden panels on outside
Purchased or leased	Purchased
Duration of use	At least 10 years



Experience the unit
virtually
Simply scan the QR code.



“We were looking for a room solution we could rely on for running our nursery and school for the next ten years.”

Tom Mooibroek —
Nursery manager, Zuidhorn



ELA nursery containers are designed to be used for a minimum of ten years. In keeping with their long life, the furnishings are of high quality.

ELA CONTAINER OFFSHORE TURNS 10

Wind, weather, rough seas, or even salt water – containers in the maritime sector and on the high seas are exposed to particular challenges. This is why ELA founded ELA Container Offshore GmbH ten years ago to offer room solutions for offshore use.

The history of our offshore business began back in 2008 with the first major order for crew accommodation for almost 200 employees on the Blue Giant dock ship in the Gulf of Mexico. Soon after this, a small ELA team began developing a standardized container with special features for use at sea.

The 20-foot ELA Offshore Allrounder was launched in mid-2011 and laid the foundation for being able to rent and sell room solutions on seagoing vessels and platforms in the future. Alongside the offshore container itself, components such as stairways and gangways were developed in order to be able to realize multi-floor container systems.

It was the increasing demand for mobile room solutions for the offshore market that ultimately led to the founding of ELA Container Offshore GmbH in 2014. This was ELA's response to the increasing demand for accommodation containers on platforms and ships, particularly from the energy industry. "The market for offshore applications for our products

is so large and at the same time so unique that it made sense to set up a separate, specialized company," said Günter Albers, Managing Partner. Since its humble beginnings, Günter Albers and Managing Director Hans Gatzemeier have led ELA Container Offshore GmbH in a co-management relationship.

Since then, our specialized offshore team has been working hard to continuously update and improve the products. The rental fleet is made up of more than 1,000 containers including accessories in offshore specification, which are available for fast and flexible use.

At our home base in Haren (Ems), ELA Container Offshore GmbH built its own brand new production hall in 2017, which was doubled in size at the beginning of 2023 in order to increase production capacity in response to rising demand.

"Before the company was founded in 2014, we would never have dreamed that the market would develop so rapidly," said Hans Gatzemeier. The company's experience and expertise as well as close partnerships have ensured that ELA Container Offshore has been able to steadily increase its share of this market.



More infos at:
www.ela-offshore.com/en/10-years-anniversary



These days, the ELA Container Offshore team includes 30 experts in the design, production, and sale of specialized offshore room solutions.



2008

First offshore project

ELA realized its first offshore project: a six-floor container facility for the Blue Giant (now known as the Mexican Giant) dock ship in the Gulf of Mexico that is used to house staff in the Gulf of Mexico.



2011

The 20-foot ELA Offshore Allrounder

The 20-foot ELA Offshore Allrounder was introduced. This standardized offshore container complies with all relevant offshore regulations and requirements in terms of equipment, prescribed materials, and dimensions.



2014

Founding of ELA Container Offshore GmbH

ELA Container Offshore GmbH was founded. Managing Directors Günter Albers and Hans Gatzemeier (from left) have been leading the company on a successful path ever since.



2015/2016

ELA Container Offshore in the USA

ELA Container Offshore USA Corp. was founded to evaluate acceptance in the U.S. market by running a sample system on a rented site and taking part in a trade fair.



2016

Move to new office building

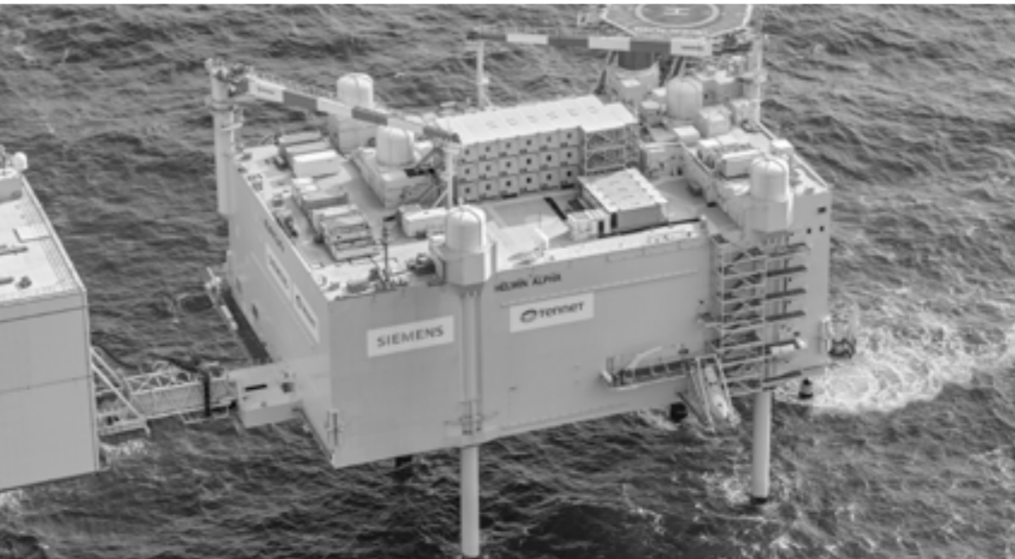
The growing ELA Container Offshore team moved from the central ELA premises to a new office building in Haren (Ems), where the company still receives customers and business partners today.



2017

Construction of offshore production hall

The offshore production hall was built at the old harbor in Haren (Ems). The move closed the geographical distance to our headquarters and optimized our production processes in the offshore sector.



2019

EU tender won

ELA Container Offshore won an EU tender from a major German energy company and has already equipped several converter platforms with offshore accommodation.



2022/2023

Expansion of production hall

In order to expand production capacity due to rising demand, the existing production hall in Haren (Ems) was doubled in size.



TEMPORARY SOLUTION FOR TRAINING CENTER

ELA training containers
for WOLF Campus

8

The temporary training center for WOLF consists of 14 ELA training containers, providing around 220m² of usable space in total across two floors.



Large windows and bright colors create a pleasant sense of space.



Two heat pump modules were installed in two ELA terrace containers with open sides for training purposes.

Temporary solution for heat pump training center

WOLF GmbH Mainburg, a business based in Mainburg in Lower Bavaria, is one of the leading suppliers of heating and air handling systems. With technology evolving at a rapid pace in this environmentally relevant area, the WOLF Group needs to stay up to date with training for its employees and sales and installation partners. In Germany alone, over 15,000 sector specialists complete training at the WOLF Campus every year. While waiting for its new training center to be built, WOLF is using an interim room solution from ELA Container.

"I couldn't wait to start working on this interesting project with the customer," said ELA Area Sales Manager Stefan Meisel.

The unit consists of 14 ELA training containers and has sanitary rooms and a built-in kitchen. Split heating and air conditioning units keep the temperature just right all year round. With acoustic sails on the ceilings too, all the boxes for comfort and convenience are checked. ELA also installed all the electrics for the training containers, including LED lights, motion sensors, and smoke detectors. Anti-slip flooring has been installed as a safety-focused feature. The unit also includes two terrace containers with wooden panels and open sides, where heat pump modules have been installed for training purposes.

"The ELA containers are so flexible that we can continue to deliver high-end training while our new training center is being built," said Ozan Seftali, Project Manager/Site Manager at WOLF.

Details

Location	Mainburg, Germany
Responsible ELA location	ELA Container GmbH, Moosburg
Room solutions	14 ELA office and sanitary containers across 2 floors
Usable space	220 m²
Use	Training center
Color	Exterior walls: Signal white, RAL 9003 Upper frame: Anthracite gray, RAL 7016 Inner walls and ceiling: White
Floor	PVC R 10, light gray
Extra equipment	Special paint, mobile ELA concrete base, acoustic ceiling sails, built-in kitchen with dishwasher, 2 terrace containers with wooden panels, glazed double door, smoke detectors
Purchased or leased	Leased
Duration of use	18 months



Fig. above

The drying container is located right on the jetty at the KNRM Terschelling Rescue Station.

Fig. below

All of the materials used are resistant to the weather and corrosion.



Drying container for KNRM on Terschelling in the Netherlands

The Royal Netherlands Sea Rescue Institution (KNRM) has been running search and rescue operations in the Wadden Sea, along the Dutch coast and its offshore islands for 200 years. For the KNRM Station on the island of Terschelling, ELA Container Nederland worked together with ELA Container Haren (Ems) to develop and has now provided a container for drying the field gear the search and rescue teams wear.


To ensure the teams can move out to the deployment site as fast as possible, the special container was placed right on the life boat's jetty. A special steel container was built with exterior dimensions of 4.00 x 3.80 x 2.59 meters to fit perfectly on the existing platform. Other features include floor paneling, a stainless steel floor drain, and plenty of wall, floor, and door insulation. A special ventilation system with an axial fan was installed to provide adequate ventilation. The ceiling is reinforced and special brackets have been provided so that the heavy survival suits can be safely hung up to dry. A 400 V/32 A supply had to be provided to power the drying technology.


For this project, the survival suits had to be able to dry, and it was also important to use materials that would be weatherproof and resistant to salt water. The paint also had to be selected carefully so that it could withstand the tough conditions in the North Sea.


"With the new drying container and its technology installations, we are now ready to move out even quicker," said Gert-Jan Wijker, Project Manager and Technical Director of KNRM IJmuiden.


Details

Location	Terschelling, Netherlands
Responsible ELA location	ELA Container Nederland BV, Groningen, ELA Container GmbH, Haren (Ems)
Room solutions	1 special steel container
Usable space	15 m²
Use	Drying container
Color	Exterior walls: Blue gray, RAL 7031, and ultramarine blue, RAL 5002
Inner walls and ceiling	smooth galvanized steel sheets
Extra equipment	Customer-specific dimensions: 4.00 x 3.80 x 2.59 meters, floor paneling with a stainless steel floor drain, wall, floor, and door insulation, ventilation system with axial fan, smooth galvanized steel sheets on the inside walls, reinforced ceiling with brackets, special paint
Purchased or leased	Purchased
Duration of use	Several years

[Experience the unit virtually](#)
Simply scan the QR code.



[Watch project video](#)
Simply scan the QR code.



01



02



03

Fig. 01

The survival suits are dried and maintained in the special container.

Fig. 02

The ceiling reinforcements allow the heavy suits to be safely hung.

Fig. 03

ELA delivered the drying container by truck and ferry to the site.

Fig. 04

The drying container allows the crews the move out even more quickly.



04



MODERN RECEPTION BUILDING

A customized solution
for long-term use



Fig. above

The color scheme used for the new ELA unit matches the other buildings on site.

Fig. middle

The ELA office containers provide for ultimate comfort with insulation, technical equipment, and furnishings.

Fig. below

The company prioritizes a friendly environment when receiving guests.



Modern reception building for the Hanrath Group in Papenburg

The Hanrath Group based in Papenburg in Lower Saxony is a popular provider of security services, including security for factories and properties, fire-related services, maritime security, and video/alarm technology. The Group also specializes in vehicle testing and offers a wide range of logistics solutions for the automotive industry. When planning out its new reception building, the Group settled on a room solution from ELA Container and bought a comfortable and custom-built office container unit to use permanently.

"As we've always found in the past, the staff at ELA are impressively knowledgeable. We've been delighted with their work once again," said Jörg Voskamp, who manages the project for the Hanrath Group.

The Hanrath Group's new reception building consists of two office containers, which provide 36 m² of usable space in total. The customer opted for extra-tall modules measuring 3.14 meters, giving a ceiling height of 2.75 meters. "This choice allowed us to install the air conditioning neatly in the suspended ceiling," explained Angelika Stele, Project Manager at ELA.

"The customer wanted us to create a friendly and inviting space for the reception area," said Stele. Based on the brief, the outside of the container unit was designed to have gray walls and blue window and door frames to match the existing Hanrath Group buildings. On the inside, the customer settled on white walls with large windows and a wooden-look floor to create a bright and friendly space that people would enjoy being in.

Details

Location	Papenburg, Germany
Responsible ELA location	ELA Container GmbH, Haren (Ems)
Room solutions	2 ELA office containers with extra-tall 3.14-meter design
Usable space	36 m ²
Use	Reception building/registration
Color	Exterior walls: Pebble gray, RAL 7032 Frame: Steel blue gray, RAL 5011 Inner walls and ceiling: White
Extra equipment	Additional insulation, high ceilings (2.75 m), suspended ceiling, split air conditioning unit, glazed double door, smoke detectors
Purchased or leased	Purchased
Duration of use	Several years



Fig. above

The ELA office containers were fully open inside, providing a pleasant sense of space.

Fig. middle

The reception area for guests featured a red carpet.

Fig. below

Around 300 attendees were welcomed in style at the Congress for Family Businesses.



Reception area at 26th Congress for Family Businesses

In March, the Witten Institute for Family Business (WIFU) at Witten/Herdecke University held its 26th Congress for Family Businesses. 180 students were involved in the planning and organization, with some 50 workshops and stage-based events being scheduled under the slogan "New Ideas in the Meeting Room." Almost 300 attendees representing family-run businesses talked to each other – and to Mona Neubaur, the Minister for Economic Affairs in North Rhine-Westphalia, and 30 other speakers – about issues such as economic policy, trends in society, and generation changes within businesses. ELA Container has been a partner for this congress – the largest of its kind in Europe – for a number of years.

"This year, we provided our mobile room systems to be used as a shuttle service area and a reception area for guests as they arrived. This was our way of helping the organizers to quite literally roll out the red carpet for attendees in the reception and cloakroom area," Lars Dammeyer, ELA Area Sales Manager, was excited to recount. The reception and cloakroom area was housed in a double container unit consisting of two extra-wide ELA office containers joined together along their longer sides. This provided a fully open area spanning 36 m² altogether.

The shuttle service area was made up of three ELA lounge containers, each of which covered 18 m². Both ELA units were bright and welcoming on the inside, with some of the furniture being provided.

"The ELA containers played a huge part in our event being such a success," said Esther Linnenbrink, a representative from the team of student organizers.

Details

Location	Witten/Herdecke, Germany
Responsible ELA location	ELA Container GmbH, Haren (Ems)
Room solutions	5 ELA office containers
Usable space	90 m²
Use	Office/reception building and lounge
Color	Exterior walls: Pebble gray, RAL 7032 Inner walls and ceiling: White
Floor	Supplied by customer: Red carpet
Extra equipment	Split heating and air conditioning unit, glazed double doors, smoke detectors
Purchased or leased	Leased
Duration of use	1 month

Außenwirtschaftspreis in the "Large Businesses" category

ELA RECEIVES THE LOWER SAXONY FOREIGN TRADE AWARD

We were awarded with Lower Saxony's Außenwirtschaftspreis ("Foreign Trade Award") 2024 in the "Large Businesses" category at the 19th Lower Saxony Foreign Trade Day in Hanover. Our management team accepted the award from Lower Saxony's Minister for Economic Affairs Olaf Lies. The annual award recognizes companies for outstanding performance and remarkable achievements in international markets.

The prestigious Außenwirtschaftspreis was awarded for the 14th time by the Lower Saxony Ministry for Economic Affairs, Transport, Construction and Digitalization. The award recognizes companies in the "Small and Medium-Sized Businesses" and "Large Businesses" categories who overcome the current economic hardships to achieve impressive export success. The jury pointed to the systematic establishment of an international presence and the offering of customized solutions in international markets as key factors for its decision to recognize ELA with the award.

Founded in 1972 and now in its second generation of leadership, our family business has its roots in the deployment of used shipping containers as secure storage and equipment containers on construction sites. Today, ELA's container solutions are in demand not only in the construction and industrial sectors, serving as office, residential, and educational space in many countries. We are already present in 24 locations across Europe. Exports accounted for nearly one third of total sales in 2023, demonstrating our clear international orientation. In some foreign markets, particularly the Netherlands, Poland and Austria, ELA has achieved such significant market shares that they are now among the company's core markets. In the last three years alone, we have added sites in Denmark, Sweden and Ireland as part of our strategic focus on Northern Europe.

Günter Albers, Managing Partner and CEO, highlights the success of the approach of entering international markets through a systematic partnering model and adapting to local needs. "Being recognized by the state of Lower Saxony fortifies our ambition to grow as a global enterprise, to react quickly to changes, and to offer our customers innovative and flexible solutions. It validates our ongoing efforts to be present in and active shape international markets," said Albers. The ELA Container management team comprising Liesel Albers-Bentlage, Günter Albers, Dr. Stefan Leopold, and Pia Albers accepted the award at the 19th Lower Saxony Foreign Trade Day in Hanover, with a promotional video for ELA in tow.

Our management team emphasized the importance of the award and our successful international business, which is reflected in both sales and the creation of new jobs. Out of a total of 1,400 employees, 390 international colleagues are directly involved in the company's international business. The award motivates us to intensify our global activities and further strengthen our presence in international markets.

[Watch the promotional video](#)
[Simply scan the QR code.](#)



The ELA Container management team accepted the award in Hanover (from left): Günter Albers, Liesel Albers-Bentlage, Pia Albers, and Dr. Stefan Leopold.

DE

ELA Container GmbH Headquarters

Zeppelinstraße 19–21
49733 Haren (Ems)
Tel +49 5932 506-0
Fax +49 5932 506-10
www.container.de
info@container.de

ELA Container GmbH Groß Ippener

Am Gewerbegebiet 35
27243 Groß Ippener
Tel +49 4224 1414-300
Fax +49 4224 1414-310
www.container.de
info@container.de

ELA Container GmbH Frankenberg

Dittersbacher
Gewerbering 7
09669 Frankenberg
Tel +49 37206 851-0
Fax +49 37206 851-10
www.container.de
info@container.de

ELA Container GmbH Billigheim

Schefflenztastraße 84
74842 Billigheim
Tel +49 6265 92775-0
Fax +49 6265 92775-10
www.container.de
info@container.de

ELA Container GmbH Moosburg

Naustraße 1
85368 Moosburg
Tel +49 8762 7266-800
Fax +49 8762 7266-810
www.container.de
info@container.de

ELA Container GmbH Tönisvorst

Lenenweg 12
47918 Tönisvorst
Tel +49 2151 7086-0
Fax +49 2151 7086-11
www.container.de
info@container.de

ELA Container GmbH Trappenkamp

Ricklinger Straße 1–7
24610 Trappenkamp
Tel +49 4323 92189-0
Fax +49 4323 92189-10
www.container.de
info@container.de

ELA Container GmbH Used-container center

Im Industriepark 20 –
Eurohafen
49733 Haren (Ems)
Tel +49 5932 506-556
Fax +49 5932 506-10
www.container.de/
gebraucht
kontakt@ela-sales.de

ELA Container Sales GmbH

Im Industriepark 20 –
Eurohafen
49733 Haren (Ems)
Tel +49 5932 506-339
Fax +49 5932 506-10
www.container24.de
kontakt@ela-sales.de

ELA Container Offshore GmbH

Zeppelinstraße 32
49733 Haren (Ems)
Tel +49 5932 7323-500
Fax +49 5932 7323-510
www.ela-offshore.com
info@ela-offshore.com

AT

ELA Container Austria GmbH

Emesbergstraße 7
4643 Pettenbach
Tel +43 7586 21501
www.ela-container.at
info@ela-container.at

BE

ELA Container Belgium BV

Eurolaan 9
9140 Temse
Tel +32 3 7719669
www.ela-container.be
info@ela-container.be

CH

ELA Container Switzerland GmbH

Hasenmoosstrasse 58
6023 Rothenburg
Tel +41 79 891 45 31
www.ela-container.ch
info@ela-container.ch

CZ

ELA Container CZ s.r.o.

Výpadová 1715
159 00 Praha-5 Radotín
Tel +420 228 885 991
www.ela-container.cz
info@ela-container.cz

DK

ELA Container GmbH

Korsvej 4
6000 Kolding
Tel +45 3116 0192
www.ela-container.dk
info@ela-container.dk

IE

ELA Container Mobile Room Solutions Ireland Limited

Lathalaeer Industrial
Estate
Baltinglass
County Wicklow
W91 WC63
Tel +353 87 1966089
www.ela-container.com
info@ela-container.ie

NL

ELA Container Nederland BV

Rouaanstraat 39
9723 CC Groningen
Tel +31 50 3182247
Fax +31 50 3185129
www.ela-container.nl
info@ela-container.nl

PL

ELA Container Polska Sp. z o.o.

ul. Łukasiewicza 6
05-200 Wolomin
Tel +48 22 2729500
Fax +48 22 4688700
www.ela-container.pl
info@ela-container.pl

SE

ELA Container Scandinavia AB

Borrgatan 9
211 24 Malmö
Tel +46 735251904
www.ela-container.se
info@ela-container.se

UK

ELA Container GmbH

Staddlethorpe Broad
Lane
Gilberdyke
Brough
HU15 2TD
Tel +44 7534 225336
www.ela-container.uk
info@ela-container.uk

WWW.
ELA-CONTAINER.
COM