



## Brief description

The 20ft ELA Offshore Light is a modified container for nearshore and onshore use and is **applicable for non-hazardous areas** on barges, pontoons or even in harbours.

### Every Container is basically equipped with...

- + outer door (2000 x 830 mm)
- + window (1050 x 840 mm) with roller shutter
- + natural ventilation
- + thermal insulation, MED certified
- + B15 wall (25 mm) and ceiling panels
- + wooden floor (28 mm), covered with PVC floor, MED certified
- + a prewiring for connection to existing PA/GA system
- + power and internet sockets, switches, lights
- + HVAC-system for heating and cooling (outside temperature: -20°C to +45°C)
- + forklift pockets
- + coating according to offshore standards

### Every Container can be outfitted as...

- + living quarter, office, meeting / dining container, drying container, small galley / coffee container, locker container, sanitary container and more

### Advantages of 20ft ELA Offshore Light Containers:

- + available at short notice
- + "Plug & Play", ready for immediate use
- + easy handling due to low weight and ISO measurements
- + available for rent and sale
- + stackable up to 4 high
- + extendable to complete accommodation facility

## Features

### Certificates and Approvals

- + ISO-Norm-R-668, High Cube
- + CSC

### Dimensions

- + L 6058 mm x W 2438 mm x H 2896 mm
- + L 20 ft x W 8 ft x H 9ft 6 in
- + Inside height: 2450 mm / 8 ft

### Weight

- + MGW: 10 t / 22,046 lbs.
- + Tare weight: 4.2 t / 9,259 lbs.

### Electrical Power Requirements

- + Main outside connection: 400 V / 50 Hz / 60 Hz, 32 A, 5-Pole
- + Alternative: 440 V / 60 Hz
- + Inside power: 230 V
- + Electrical installation according to VDE 0100.



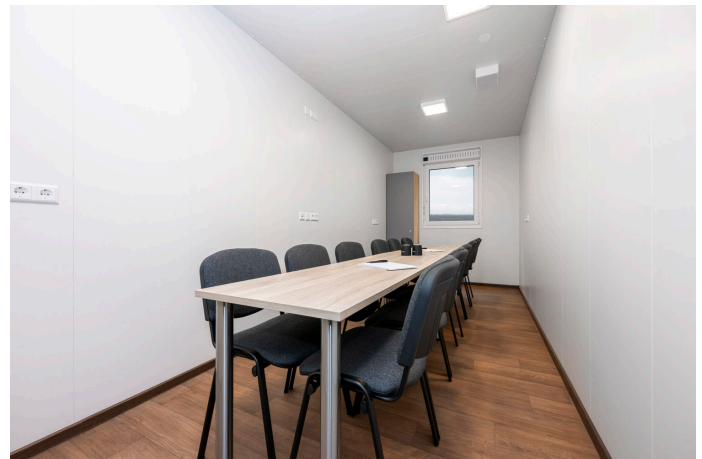
Living Quarter



Drying Container



Gym Container



Dining Container



Meeting Room (Double)



Office Container